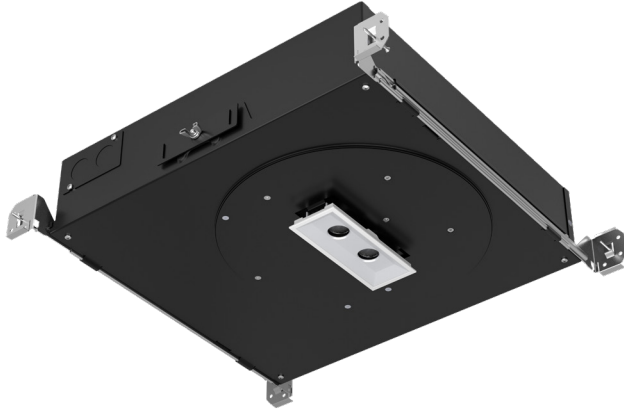


Project: _____

Type: _____

Note: _____

WHISPER MULTIPLE LED DOWNLIGHT



LED LIGHT ENGINE	
RATED WATTAGES	Static White: 2-UP = 21W, 3-UP = 31W, 4UP = 30W Warm Dim: 2-UP = 19W, 3UP = 29W, 4UP = 28W
SYSTEM DELIVERED LUMENS	Up to 2496 lumens with 4 head @ 4000K 50 deg optic - with 3/4" round apertures @ a 1-3/4" head to head pitch
MODULE DELIVERED LUMENS	Up to 816 lm @ 4000K 50° Optic
SYSTEM EFFICACY	Up to 82.9 LPW @ 4000K - 4-UP 50° Optic
CCT @ 90CRI	2700K, 3000K, 3500K, 4000K, Warm Dim
COLOR QUALITY	90+ CRI, 2-Step SDCM
LED LIFETIME	55,000 hours @ L70
ADJUSTABLE	0° to 30° tilt, 360° pan

POWER SUPPLY	
INPUT VOLTAGE	120-277V, 50/60Hz
DIMMING	TRIAC, ELV and 0-10VDC and Lutron Homeworks/Ecosystem options available
SERVICABILITY	All options: Below ceiling access

SILENT VU™ OPTICS TECHNOLOGY

OPTICS	50° Installed and 30° included
--------	--------------------------------

SYSTEM DELIVERED LUMENS MATRIX - REFLECTOR

CCT & CRI	2 UP 30° OPTIC	2 UP 50° OPTIC	3 UP 30° OPTIC	3 UP 50° OPTIC	4 UP 30° OPTIC	4 UP 50° OPTIC
2700K (90CRI)	982	1419	1453	2015	1505	2169
3000K (90CRI)	1040	1503	1540	2135	1594	2298
3500K (90CRI)	1099	1588	1626	2255	1684	2427
4000K (90CRI)	1130	1633	1673	2319	1732	2496
Warm Dim (98CRI)	614	829	843	1183	1025	1309

FEATURES

- ¾" aperture downlight minimizes fixture and light noise at the ceiling
- Delivers up to 2495 lumens of general or accent light using SilentVu™ optical control at 50° or 30°
- 55,000 hr LED lifetime and available integral or remote driver options
- Housing available in 2, 3, and 4 light module options
- Modules pan 90° together as a set
- Integral driver is removeable from below ceiling

TRIM OPTIONS

- Adjustable
- Wet Location
- Round Apertures
- Standard, Trimless, and Wood Ceiling

TRIM COLORS

- White
- Black
- Champagne

REFLECTOR COLORS

- White
- Black
- Champagne
- Satin Aluminum

HOUSING

- Includes (2) galvanized steel adjustable hanger bars and butterfly brackets.
- Ceiling Material: Drywall, T-bar grid, Wood and Millwork
- Steel junction box with four ½" knockouts
- All options are Air Tight and CCEA (Chicago Plenum)
- 3½" minimum plenum height above the ceiling required

LISTING/WARRANTY

- cULus Listed
- UL Listed for Damp Location (All Styles) & Wet Location with AL reflector options.
- ASTM E283 Certified Airtight
- IC Rated
- CA Title 24-JA8 Compliant with Static White
- Five (5) years limited warranty
- CCEA (Chicago Plenum) Approved



Project: _____

Type: _____

Note: _____

WHISPER MULTIPLE LED DOWNLIGHT

ORDER MATRIX

WHISPER MULTIPLE HOUSING IC (Example: WSM-AIC-2-10S1-SHB = Whisper Multiple IC, 2-head 10W, Standard Integral Driver, Standard Hanger Bars)

PRODUCT FAMILY	HEADS	POWER PER HEAD	INTEGRAL DRIVER OPTIONS	HANGER BAR
WSM-AIC- Whisper Multiple IC	<input type="checkbox"/> 2 2 Head	-10 10W	S1 (1) Whisper with Universal Dim Driver: 1%-100% 0-10V, *TRIAC, ELV, 120V/277V *TRIAC/ELV dimming only @ 120V	-SHB Standard -C24 24" C-Channel -C48 48" C-Channel
	<input type="checkbox"/> 3 3 Head			
	<input type="checkbox"/> 4 4 Head	-7 7W	REMOTE DRIVER OPTIONS SR1 (1) Whisper + (1) Universal Dim Driver: 1%-100% 0-10V, TRIAC, or ELV, 120V/277V *TRIAC/ELV dimming only @ 120V ER1 (1) Whisper + (1) EldoLED Dim Driver: 0.1%-100% 0-10V, 120V/277V LRE1 (1) Whisper + (1) Lutron Dim Driver: 1%-100% EcoSystem, 120V/277V	

- 2 & 3 Head selection only for 10W.
- 7W selection only for 4 Head option.
- Remote Driver Options listed above are specifically tuned to power the corresponding number of Whispers indicated and must be installed in the configuration as ordered: (1) Whisper + (1) Remote Driver, (2) Whispers + (1) Remote Driver, or (3) Whispers + (1) Remote Driver as defined above.
- For Remote Driver options, specific installation provisions should meet local code and jurisdiction requirements as determined by your licensed electrical contractor. DC wiring will run between the provided CSL Whisper junction box and the remote mounted driver. Generally, #12AWG, #14AWG, and #18AWG stranded or solid UL certified power wiring can accommodate run lengths of up to 50ft between the installed CSL Whisper.

Emergency Options only applicable for integral driver options.

EMERGENCY OPTIONS		
EM-1000 (25W Remote Inverter)	EM-1003-CA (35W Remote Inverter) Title 20	EM-1006 (25W Remote Inverter) Title 20
EM-1002 (10W Remote Emergency Driver)	EM-1004 (50W Remote Inverter)	

Project: _____

Type: _____

Note: _____

WHISPER MULTIPLE LED DOWNLIGHT

ORDER MATRIX

WHISPER MULTIPLE STANDARD TRIM

(Example: WSM-AIC-2-2790-RSTWT-STWT = Whisper Multiple AIC Trim, 2 head, 2700K 90CRI, Round Standard, White Trim, Standard Reflector White)

PRODUCT FAMILY	HEADS	CCT & CRI	APERTURE SHAPE	TRIM STYLE	TRIM COLOR
WSM-AIC - Whisper Multiple AIC	2 Head	-2790 2700K 90CRI	-R Round	-ST Standard	TL Trimless/Wood Ceiling
	3 Head	-3090 3000K 90CRI		-TL Trimless	WT White
	4 Head	-3590 3500K 90CRI		-WD Wood Ceiling	BK Black
		-4090 4000K 90CRI			
		-WD98 Warm Dim 98CRI 1800K - 3000K			

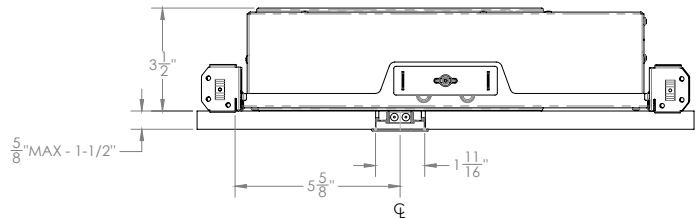
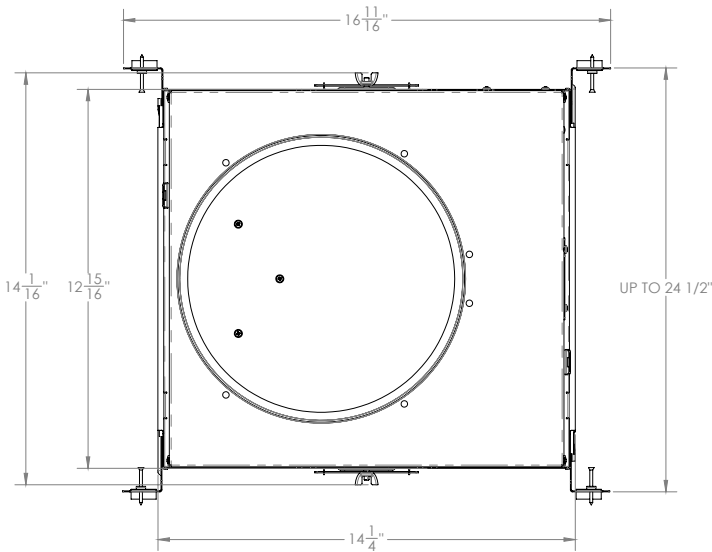
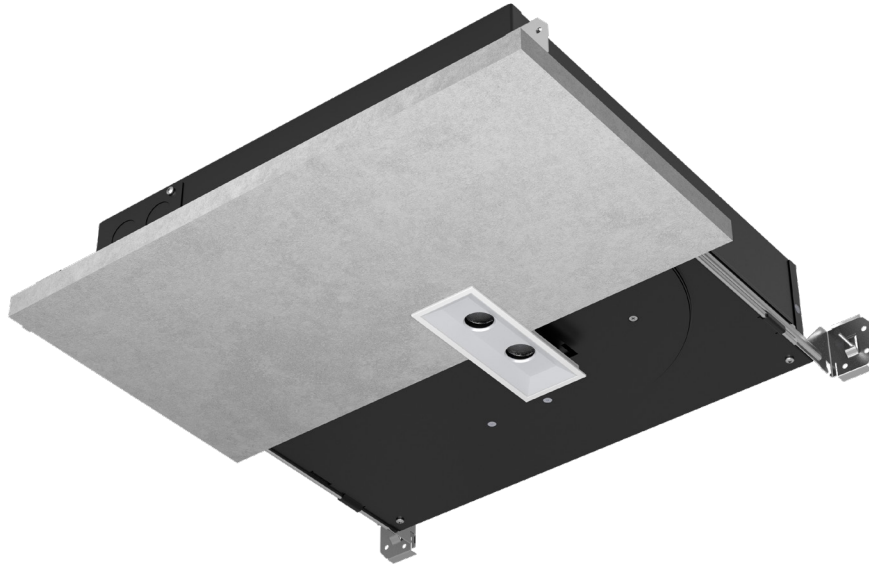
REFLECTOR TYPE	REFLECTOR COLOR
ST Standard (Adjustable)	WT White
AL Adjustable Lens (Wet Location)	BK Black
	CN Champagne
	SA Satin Aluminum

- All Modules have a 50° optic installed but has a 30° in the box.
- WD98 not Title 24 JA8 Compliant.
- For 2,3, and 4-head select R as their Apertures are round but with a Rectangular Trim Shape.
- ST is with a Flanged Trim

WHISPER MULTIPLE LED DOWNLIGHT

HOUSING AND LIGHT ENGINE LINE DRAWINGS

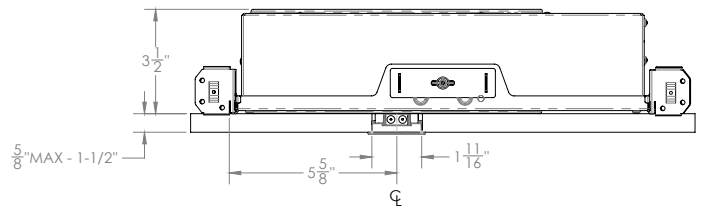
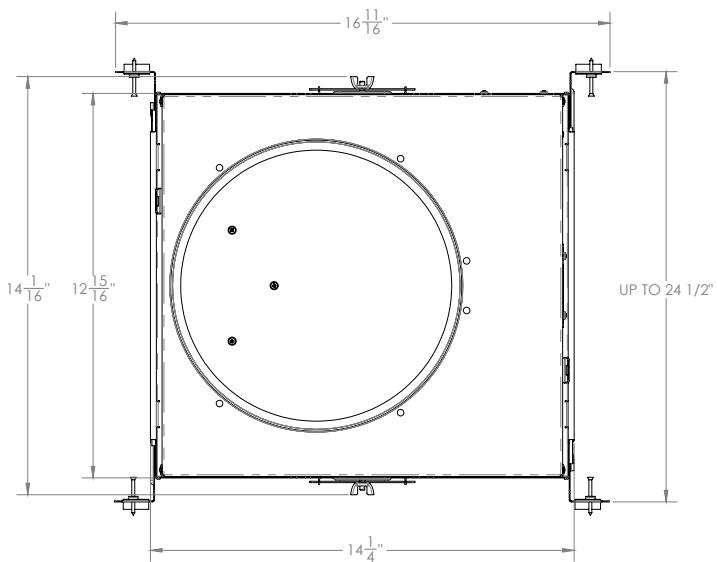
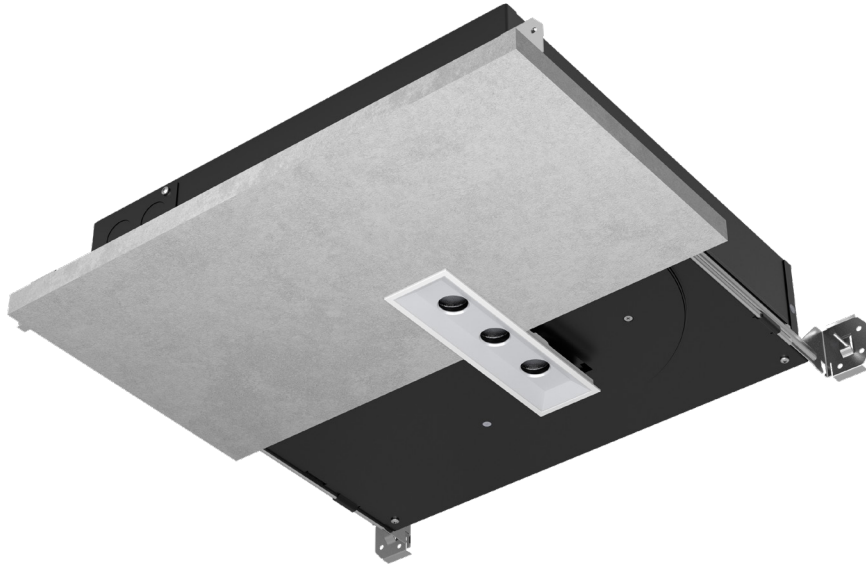
WSM-AIC-2 New Construction IC Housing (2 Head)



WHISPER MULTIPLE LED DOWNLIGHT

HOUSING AND LIGHT ENGINE LINE DRAWINGS

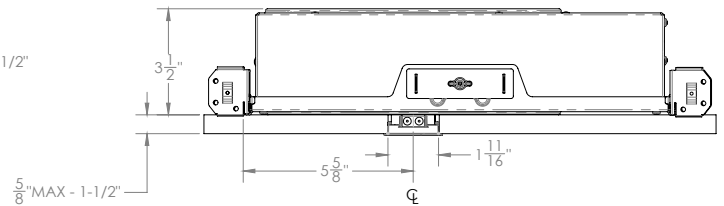
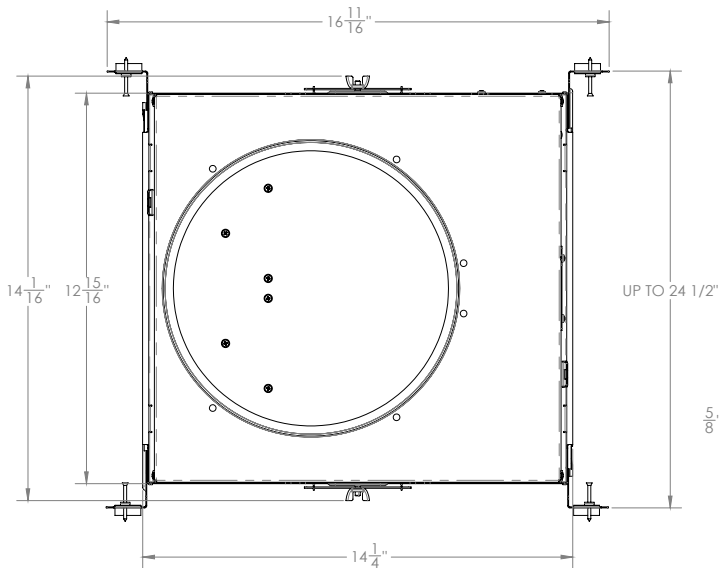
WSM-AIC-3 New Construction IC Housing (3 Head)



WHISPER MULTIPLE LED DOWNLIGHT

HOUSING AND LIGHT ENGINE LINE DRAWINGS

WSM-AIC-4
New Construction IC Housing (4 Head)



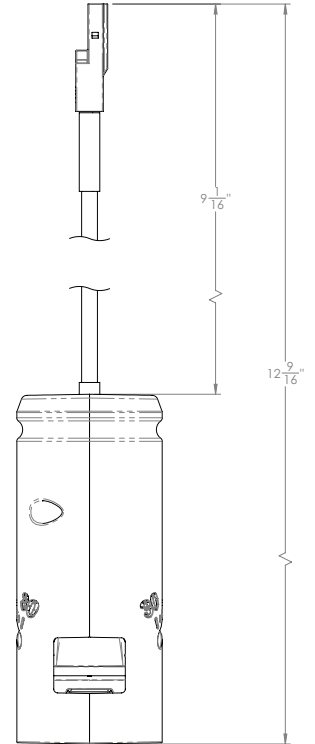
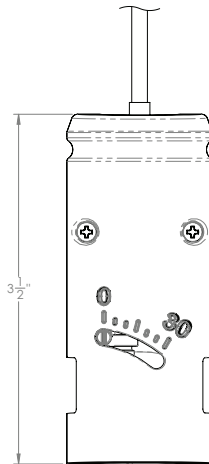
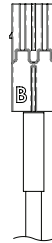
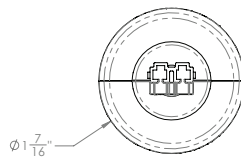
Project: _____

Type: _____

Note: _____

WHISPER MULTIPLE LED DOWNLIGHT

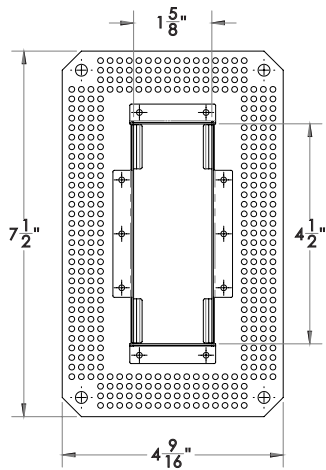
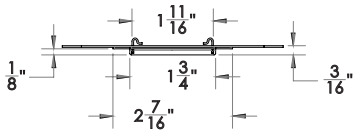
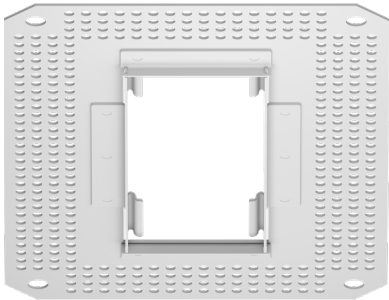
WSM-AIC (LIGHT MODULE)



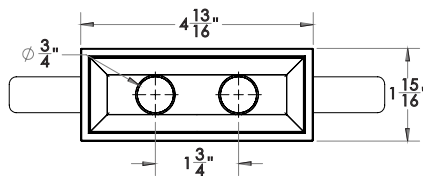
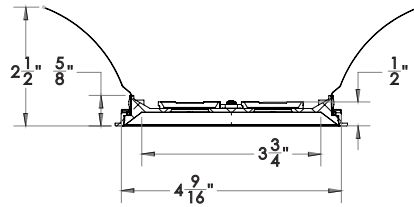
WHISPER MULTIPLE LED DOWNLIGHT

TRIM STYLES

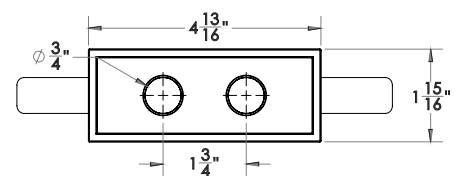
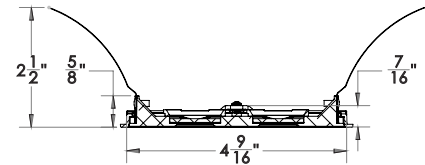
2 TL
2 HEAD TRIMLESS



2 ST
2 HEAD STANDARD



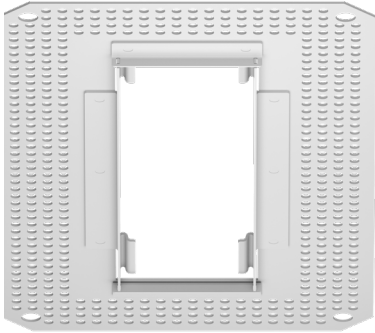
2 AL
2 HEAD ADJUSTABLE



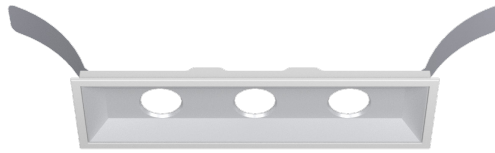
WHISPER MULTIPLE LED DOWNLIGHT

TRIM STYLES

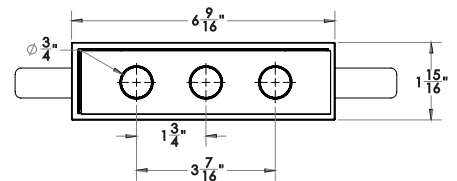
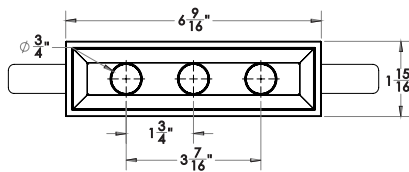
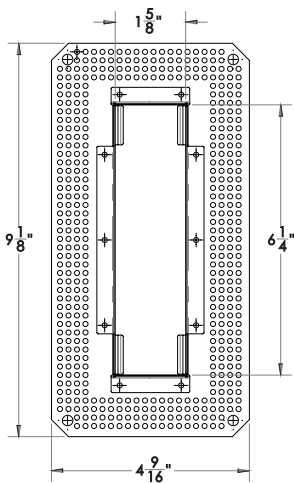
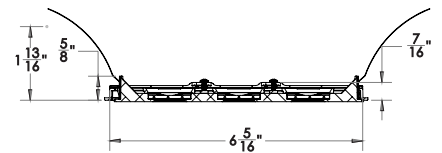
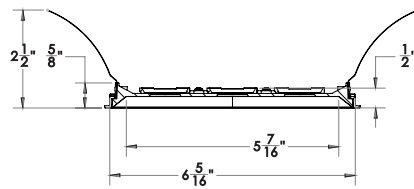
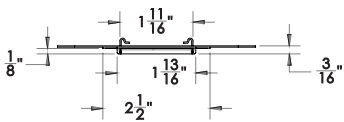
3 TL
3 HEAD TRIMLESS



3 ST
3 HEAD STANDARD



3 AL
3 HEAD ADJUSTABLE



CSL | WHISPER MULTIPLES

Spec-00280 WHISPER MULT. V1.0 Revised 04/15/24

Project: _____

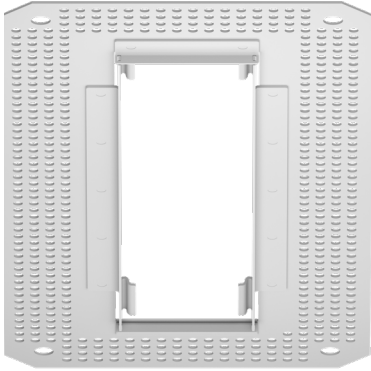
Type: _____

Note: _____

WHISPER MULTIPLE LED DOWNLIGHT

TRIM STYLES

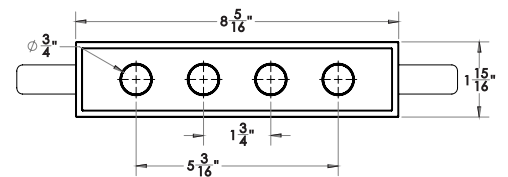
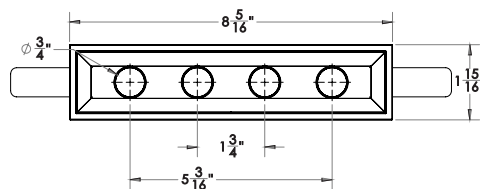
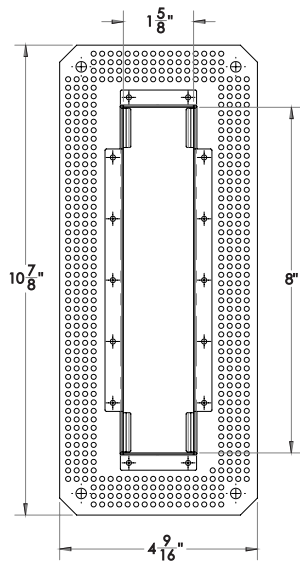
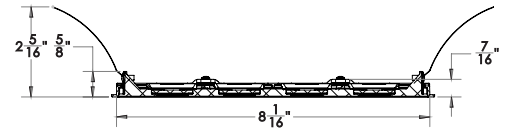
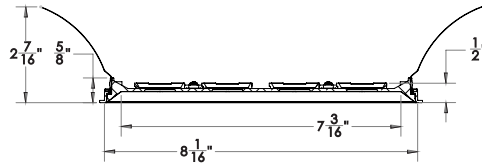
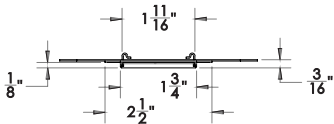
4 TL
4 HEAD TRIMLESS



4 ST
4 HEAD STANDARD



4 AL
4 HEAD ADJUSTABLE



WHISPER MULTIPLE LED DOWNLIGHT

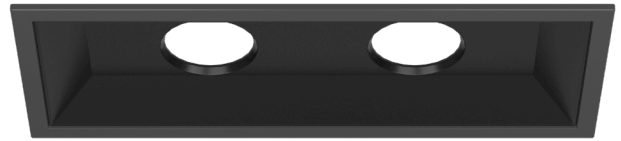
TRIM FINISHES



2-RA-STWT-STWT

WT White Trim

WT White Reflector



2-RA-STBK-STBK

BK Black Trim

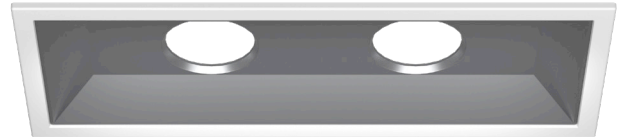
BK Black Reflector



2-RA-STCN-STCN

CN Champagne Trim

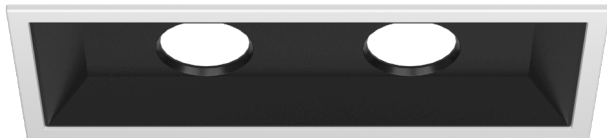
CN Champagne Reflector



2-RA-STWT-STSA

WT White Trim

SA Satin Aluminum



2-RA-STWT-STBK

WT White Trim

BK Black Reflector



2-RA-STWT-STCN

WT White Trim

CN Champagne Reflector

Project: _____

Type: _____

Note: _____

WHISPER MULTIPLE LED DOWNLIGHT

TRIM FINISHES



3-RA-STWT-STWT

WT White Trim

WT White Reflector



3-RA-STBK-STBK

BK Black Trim

BK Black Reflector



3-RA-STCN-STCN

CN Champagne Trim

CN Champagne Reflector



3-RA-STWT-STSA

WT White Trim

SA Satin Aluminum



3-RA-STWT-STBK

WT White Trim

BK Black Reflector



3-RA-STWT-STCN

WT White Trim

CN Champagne Reflector

Project: _____

Type: _____

Note: _____

WHISPER MULTIPLE LED DOWNLIGHT

TRIM FINISHES



3-RA-STWT-STWT

WT White Trim

WT White Reflector



3-RA-STBK-STBK

BK Black Trim

BK Black Reflector



3-RA-STCN-STCN

CN Champagne Trim

CN Champagne Reflector



3-RA-STWT-STSA

WT White Trim

SA Satin Aluminum



3-RA-STWT-STBK

WT White Trim

BK Black Reflector



3-RA-STWT-STCN

WT White Trim

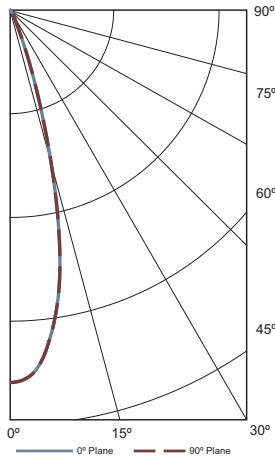
CN Champagne Reflector

WHISPER MULTIPLE LED DOWNLIGHT

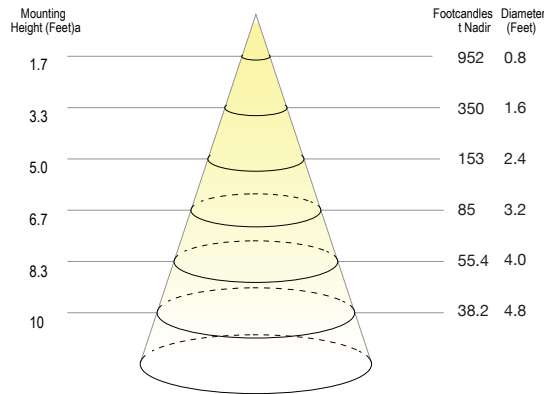
PHOTOMETRICS

Whisper Downlight 2 Head (2700K, 90CRI, 30° Optic, 20W) ST Trim - ST Reflector

Polar Plot



Cone of Light Tabulation



VOLTAGE	CURRENT	POWER
120 VAC	0.18A	21.02W

POWER FACTOR	FREQUENCY	CURRENT THD
0.97	60 Hz	16.41%

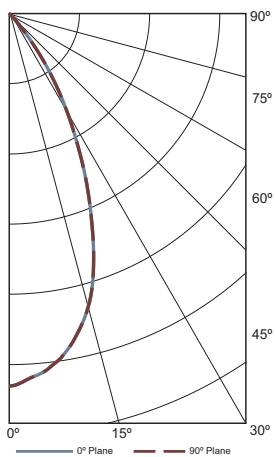
Summary of Results

Spacing Criteria	Total Lumen Output:	982.03 lm
0-180: 0.46	Luminaire Efficacy:	46.7 lpw
90-270: 0.48	Maximum Candela:	3816 cd

ZONE	LUMENS	% OF LUMINAIRE
0-40	971	98.9%
0-60	980.54	99.8%
0-90	982.03	100%

Whisper Downlight 2 Head (2700K, 90CRI, 50° Optic, 20W) ST Trim - ST Reflector

Polar Plot



Cone of Light Tabulation



VOLTAGE	CURRENT	POWER
120 VAC	0.18A	21.11W

POWER FACTOR	FREQUENCY	CURRENT THD
0.97	60 Hz	16.22%

Summary of Results

Spacing Criteria	Total Lumen Output:	1419 lm
0-180: 0.78	Luminaire Efficacy:	67 lpw
90-270: 0.78	Maximum Candela:	2013 cd

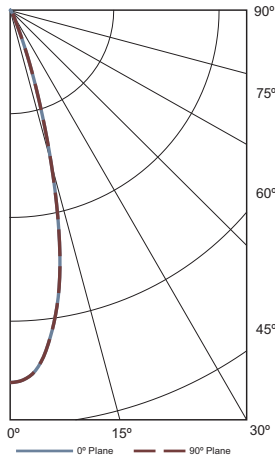
ZONE	LUMENS	% OF LUMINAIRE
0-40	1332.92	93.9%
0-60	1413.73	99.6%
0-90	1419.01	100%

WHISPER MULTIPLE LED DOWNLIGHT

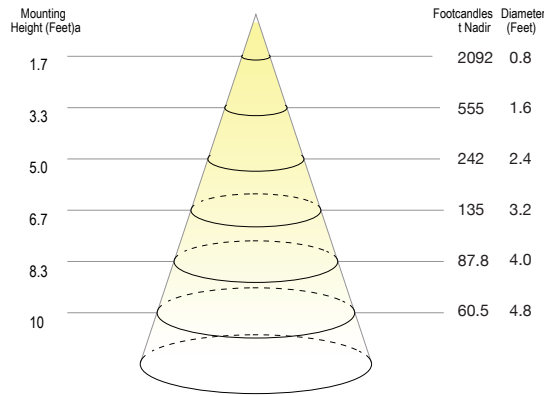
PHOTOMETRICS

Whisper Downlight 3 Head (2700K, 90CRI, 30° Optic, 30W) ST Trim - ST Reflector

Polar Plot



Cone of Light Tabulation



VOLTAGE	CURRENT	POWER
120 VAC	0.27A	30.96W

POWER FACTOR	FREQUENCY	CURRENT THD
0.9559	60 Hz	15.95%

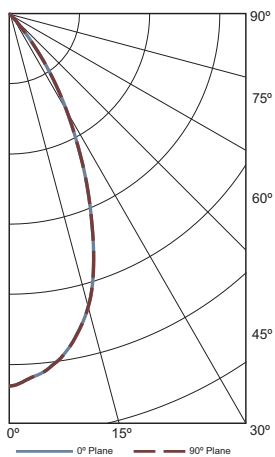
Summary of Results

Spacing Criteria	Total Lumen Output:	1453.39 lm
0-180: 0.46	Luminaire Efficacy:	47.0 lpw
90-270: 0.48	Maximum Candela:	6046 cd

ZONE	LUMENS	% OF LUMINAIRE
0-40	1437.37	98.9%
0-60	1450.15	99.8%
0-90	1453.39	100%

Whisper Downlight 3 Head (2700K, 90CRI, 50° Optic, 30W) ST Trim - ST Reflector

Polar Plot



Cone of Light Tabulation



VOLTAGE	CURRENT	POWER
120 VAC	0.27A	31.05W

POWER FACTOR	FREQUENCY	CURRENT THD
0.9578	60 Hz	16.0%

Summary of Results

Spacing Criteria	Total Lumen Output:	2015.32 lm
0-180: 0.82	Luminaire Efficacy:	65.0 lpw
90-270: 0.82	Maximum Candela:	2893 cd

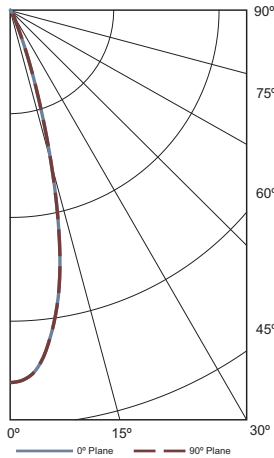
ZONE	LUMENS	% OF LUMINAIRE
0-40	1933.18	95.9%
0-60	2008.63	99.7%
0-90	2015.32	100%

WHISPER MULTIPLE LED DOWNLIGHT

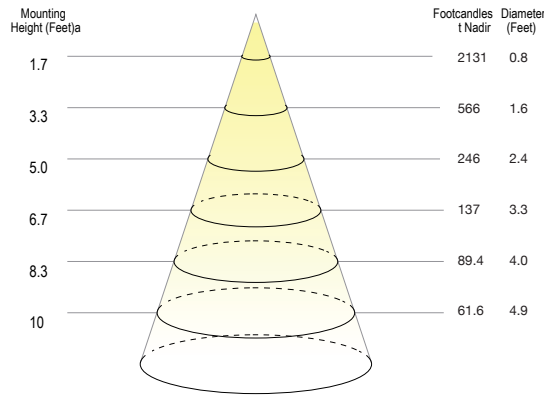
PHOTOMETRICS

Whisper Downlight 4 Head (2700K, 90CRI, 30° Optic, 30W) ST Trim - ST Reflector

Polar Plot



Cone of Light Tabulation



VOLTAGE	CURRENT	POWER
120 VAC	0.26A	30.06W

POWER FACTOR	FREQUENCY	CURRENT THD
0.9525	60 Hz	16.76%

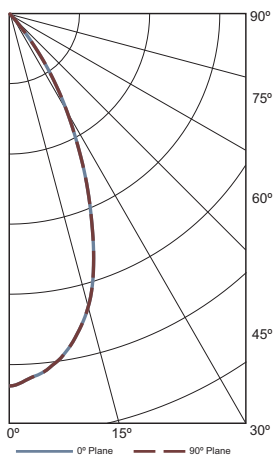
Summary of Results

Spacing Criteria	Total Lumen Output:	1504.83 lm
0-180: 0.46	Luminaire Efficacy:	50.0 lpw
90-270: 0.48	Maximum Candela:	6160 cd

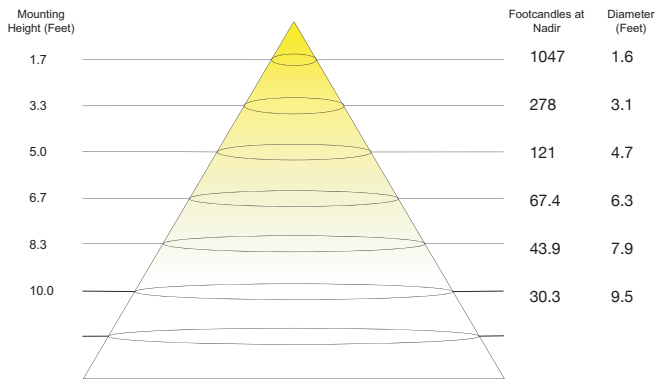
ZONE	LUMENS	% OF LUMINAIRE
0-40	1484.08	98.6%
0-60	1499.41	99.6%
0-90	1504.83	100%

Whisper Downlight 4 Head (2700K, 90CRI, 50° Optic, 30W) ST Trim - ST Reflector

Polar Plot



Cone of Light Tabulation



VOLTAGE	CURRENT	POWER
120 VAC	0.26A	30.06W

POWER FACTOR	FREQUENCY	CURRENT THD
0.9529	60 Hz	16.58%

Summary of Results

Spacing Criteria	Total Lumen Output:	2168.69 lm
0-180: 0.82	Luminaire Efficacy:	72 lpw
90-270: 0.82	Maximum Candela:	3040 cd

ZONE	LUMENS	% OF LUMINAIRE
0-40	2060.88	95%
0-60	2158.59	99.5%
0-90	2168.69	100%

Project: _____

Type: _____

Note: _____

WHISPER MULTIPLE LED DOWNLIGHT

DIMMING GUIDE

S1

- 120/277V input power
- 0-10V dimming, 1%-100%
- TRIAC (forward-phase or leading-edge) dimming, 1%, 120V only
- ELV (reverse-phase or trailing-edge) dimming, 1%, 120V only

SR1

- 120/277V input power
- Non-linear 0-10V dimming, 1%-100%
- TRIAC (forward-phase or leading-edge) dimming, 1%, 120V only
- ELV (reverse-phase or trailing-edge) dimming, 1%, 120V only

120VAC DIMMERS

MFG.	MODEL	MFG.	MODEL	MFG.	MODEL
Lutron	S-603PG	Lutron	DVELV-303P	Lutron	CT-103P
Leviton	IPI06-1LZ	Lutron	SELV-300P	Cooper	SLC03P
Leviton	6631-2	Leviton	6683-IW	Leviton	IPE04
Lutron	DVCL-153P	Leviton	6161	Lutron	MAELV-600
Lutron	DV-600P	Leviton	6633-P	Lutron	FAELV-500
Lutron	TGCL-153P	Lutron	TG-600P	Lightolier	ZP260QEW
Lutron	S-600P	Cooper	DLC03P	Cooper	DAL06P
Leviton	VPE06	Lutron	LG-600P		

ER1 (ELDO LED)

- 0-10V dimming, 1% dim-to-off

COMPATIBLE 0-10V DIMMERS AND SWITCHES

DIMMER MANUFACTURER	WEBSITE	TYPE	RECOMMENDED DIMMING CURVE
Busch-Jaeger	www.busch-jaeger.de	2112U-101	Logarithmic
Jung	www.jung.de	240-10	Logarithmic
Leviton Lighting Controls	www.leviton.com	IllumaTech - IP710-DLX	Logarithmic
Lightolier Controls	www.lightolier.com	ZP600FAM120	Logarithmic
Lutron Electronics	www.lutron.com/LEDtool	Nova T - NTFTV Diva - DVTV, Diva - NFTV	Linear Linear
Merten	www.merten.de	5729	Logarithmic
Pass & Seymour	www.legrand.us	CD4FB-W	Logarithmic
The Watt Stopper	www.wattstopper.com	DCLV1	Logarithmic
Sensor Switch	www.sensorswitch.com	nIO EZ	Linear
Synergy	www.synergylightingcontrols.com	ISD BC	Logarithmic

COMPATIBLE DIMMING CONTROL SYSTEMS

CONTROL MANUFACTURER	WEBSITE	TYPE	RECOMMENDED DIMMING CURVE
Lutron Electronics	www.lutron.com/LEDtool	GraphicEye - GRX-TVI w GRX3503, Energy Savr Node - QSN-4T16-S, TVM2 Module	Linear
Crestron	www.crestron.com	GLX-OIMFLV8, GLXP-OIMFLV8, GLPAC-DIMFLV4-*, GLPAC-DIM- FLV8-*, GLPP-DIMFLVEX-PM, GLPP-1DIMFLV2EX-PM, GLPP-1DIMFLV3EX-PM, DIN-AO8, DIN-4DIMFLV4, CLS-EXP-DIMFLV, CLCI-1DIMFLV2EX	Logarithmic
ABB	www.abb.com/KNX	SD/S 2.16.1	Logarithmic

Note: All dimming guidance presented, based on driver manufacturers testing and recommendations.

17 of 17