

STANDARD FINISHES

ABL (Aegean Blue)	PNC (Painted Natural Copper)
BB (Burnished Bronze)	RD (Red)
BK (Gloss Black)	SGR (Sage Green)
BLU (Blue)	SND (Sand)
DVG (Dove Gray)	SS (Satin Silver)
FLG (Flannel Gray)	TBZ (Textured Bronze)
GA (Galvanized)	TGP (Textured Graphite)
GWT (Gloss White)	TNG (Tangerine)
LG (Lime Green)	TTL (Tahitian Teal)
MB (Matte Black)	WT (Semi Gloss White)
MBL (Midnight Blue)	YEL (Yellow)
PNA (Painted Natural Aluminum)	

Performance Data

CCT	CRI	Wattage	Delivered Lumens	Efficacy
3000	90 CRI	11W	650 lm	60 lpw

*Based on 3500K 90CRI 30deg optic configuration at 120VAC input
Lumens will vary depending on CCT, optic & lens option

Specifications

Field Replaceable LED Light Engine

- 10W LED delivers 650lm
- 2700K, 3000K, and 3500K
- 90 CRI Options
- 35° adjustability with 360° aiming
- Available in 3", 6", and 12" lengths
- ELV/Triac 0-10V dimming 1-100%

6 Different Mounting Options

- Stem Mount
- Stem Mounted Integral Driver
- Cord Mount
- Cord Mount Remote Driver
- Cord Mount Integral Driver
- Flush Mount Remote Driver

Finishes

Available in many colors with optional coastal coating to protect finish in coastal environments

Mounting

4' of stem included: (1) 6", (2) 12" & (1) 18" (includes couplers)

Listing / Warranty

- Five (5) year limited warranty
- UL listed to US and Canadian standards for damp location - E327611
- UL listed to US and Canadian standards for damp locations
- Meets CEC Title 24 JA8 High Efficacy LED requirements



Notes:

- 80 CRI options not compliant with CEC Title 24 requirements
- Only NL media option is listed with Energy Star and meets CEC Title 24 requirements

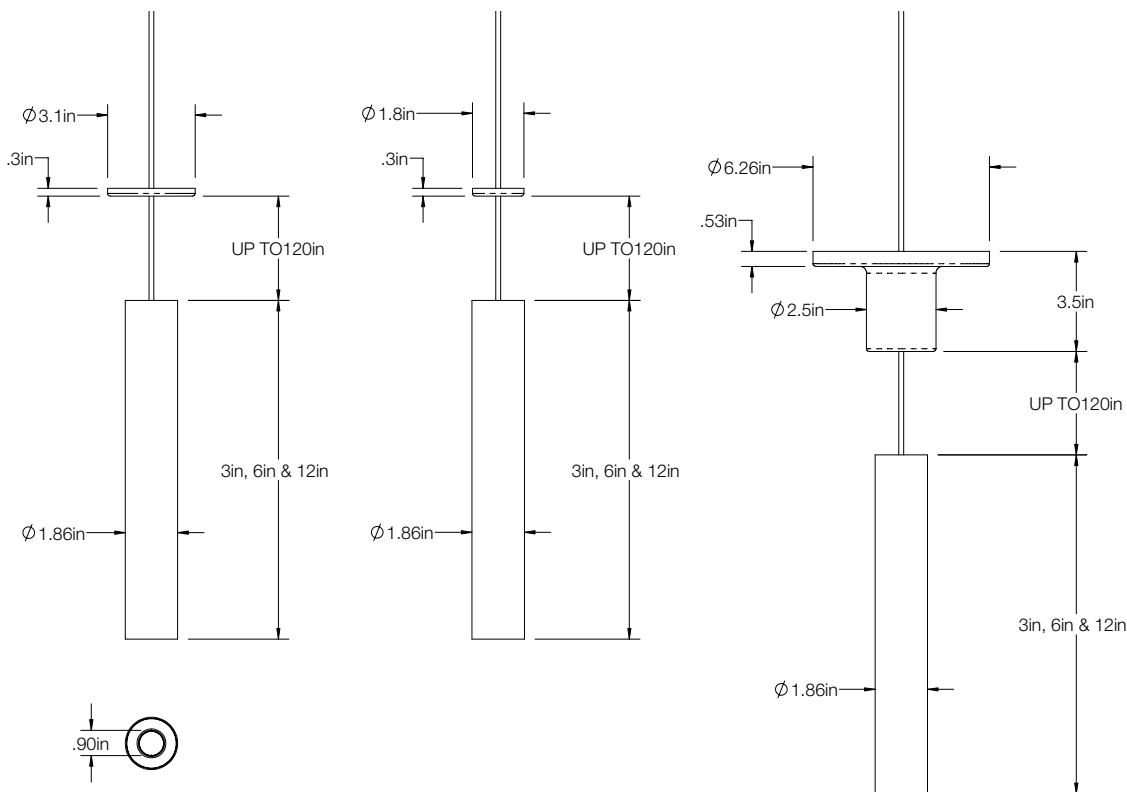
Order Matrix

GyroShift™ 1" Pendant Cylinder (Example: LP1-SFT-30-90-6-50-WT-NL-ST)

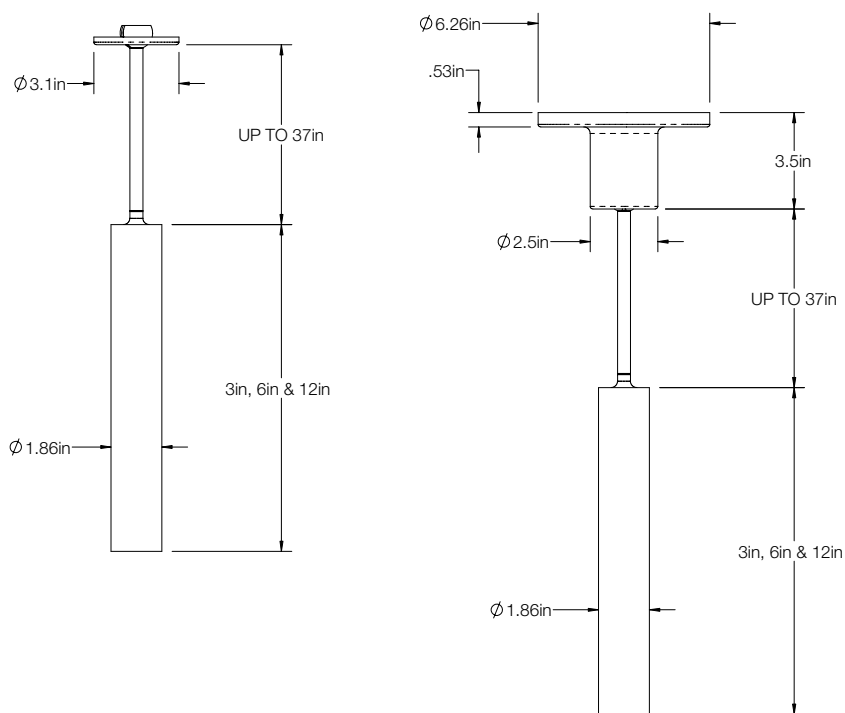
Series	CCT	CRI	Fixture Length	Beam Angle	Finishes	Coastal Coating Option	Media	Mounting Type
LP1-SFT- (Round)	27 (2700K)	80- (80 CRI)	3- (3" length)	30- (30°)	ABL BB BK BLU DVG FLG GA GWT LG MB MBL PNA PNC RD SGR SND SS TBZ TGP TNG TTL WT YEL	(blank) (No coating)	-NL (No Lens)	ST (Stem Mount) STI (Stem Mount Integral Driver) CD (Cord Mount) CDR (Cord Mount Remote Driver) CDI (Cord Mount Integral Driver) FMTR (Flush Mount Remote Driver)
	30 (3000K)	90- (90 CRI)	6- (6" length)	50- (50°)		-C (Coating)	-CL (Clear Lens)	
	35 (3500K)		12- (12" length)				-FR (Frosted Lens) -MP (Solite Lens) -LS (Linear Spread) -WW* (Wall Wash)	

Dimensions

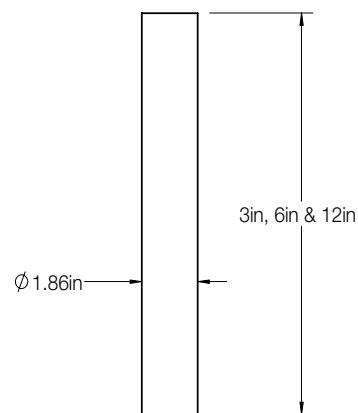
Cord Mount Diagrams



Stem Mount Diagrams

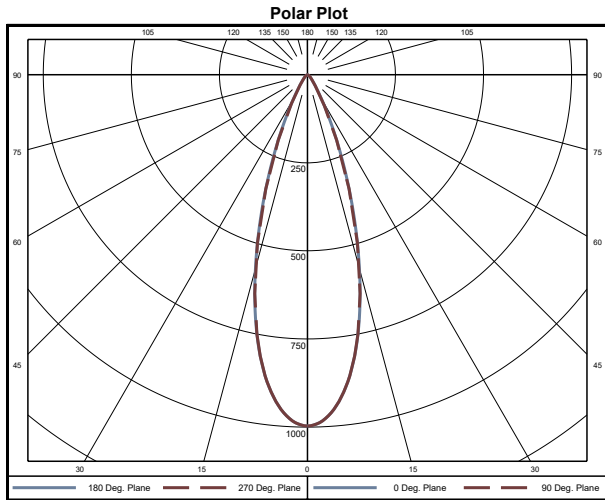


Flush Mount Diagram

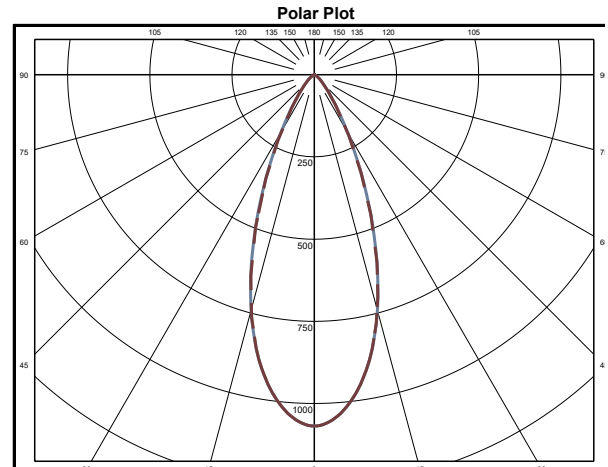


PHOTOMETRY

GyroShift 1" Cylinder / 30° Optic



GyroShift 1" Cylinder / 50° Optic



LUMEN CHART

GYROSHIFT™ 1" CYLINDER

	90CRI		80CRI		Wattage:
	30°	50°	30°	50°	
3500K	650	641	813	802	10.8
3000K	650	641	754	743	
2700K	606	598	702	692	

EFFICACY CHART

GYROSHIFT™ 1" CYLINDER

	90CRI		80CRI	
	30°	50°	30°	50°
3500K	60	59	75	74
3000K	60	59	70	69
2700K	56	55	65	64

COMPATIBLE DIMMER CHARTS

COMPATIBLE PHASE CUT DIMMERS AND DIMMING RANGE

Manufacturer	Model	Manufacturer	Model
Cooper	DAL06P	Lutron	CT103P
	DLC03P		DV600P
	SLC03P		DVCL-153P
Leviton	6161		DVEL303P
	6631-2		FAELV500
	6633-P		LG600P
	6673-10W		MAELV600
	6683-IW		S600P
	IPE04		S-603PG
	IPI06-1LZ		SELV300P
	VPE06		TG-600P
Lightolier	ZP26QEW		TGCL-153P

COMPATIBLE 1-10V DIMMERS AND DIMMING RANGE

Manufacturer	Model
Leviton	IP740-DLZ
Lightolier	ZP600FAM120
	V2000FAMU
Lutron	DVTV
	NTFTV
Crestron	CLS-EXP-DIMFLV
	DIN-4DIMFLV4
	DIN-A08
	GLX-DIMFLV8