

GYROSHIFT MULTIPLES - WOOD CEILING - INSTALLATION INSTRUCTIONS

**READ AND FOLLOW ALL SAFETY INSTRUCTIONS!
SAVE THESE INSTRUCTIONS AND DELIVER TO OWNER AFTER INSTALLATION.**

⚠️ WARNING: RISK OF ELECTRIC SHOCK

- Before installation or servicing **DISCONNECT POWER BY SHUTTING OFF THE CIRCUIT breakers** both to the outlet box and to its associated wall switch.
- Installation and service of luminaires should be performed by a qualified licensed electrician in accordance with all local and National Electrical Codes.
- Do not install damaged product.
- Verify that supply voltage is correct by comparing it with the luminaire label information.
- All wiring connections should be capped with UL approved wire connectors.

⚠️ WARNING: RISK OF INJURY

- Allow luminaire to cool before servicing.
- Follow all manufacturer's warning and restrictions for driver type, mounting locations, replacement and recycling.
- Wear safety glasses and gloves when installing, maintaining or servicing.
- Avoid direct eye exposure to the light source while it is on.

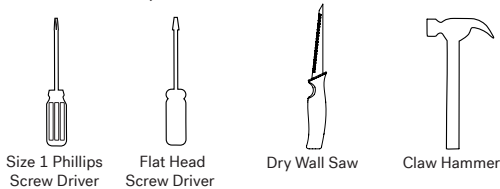
⚠️ WARNING: RISK OF FIRE

- Do not separate any other wires that may be in the box.
- Do not damage the insulation of existing wiring.
- In regular circumstances the **BLACK** wire will be the "Hot" lead and the **WHITE** wire will be the "Neutral" or "Common" lead. A **GREEN** or **BARE COPPER** wire is the "Ground." In older buildings, it is always good practice to reconfirm the polarity of the wiring.

⚠️ RISK OF PRODUCT DAMAGE

- Never connect components under load.
- Do not touch the yellow surface of the LED as it may damage the light engine.

TOOLS REQUIRED



ACCESSORIES REQUIRED



WHAT'S IN THE BOX

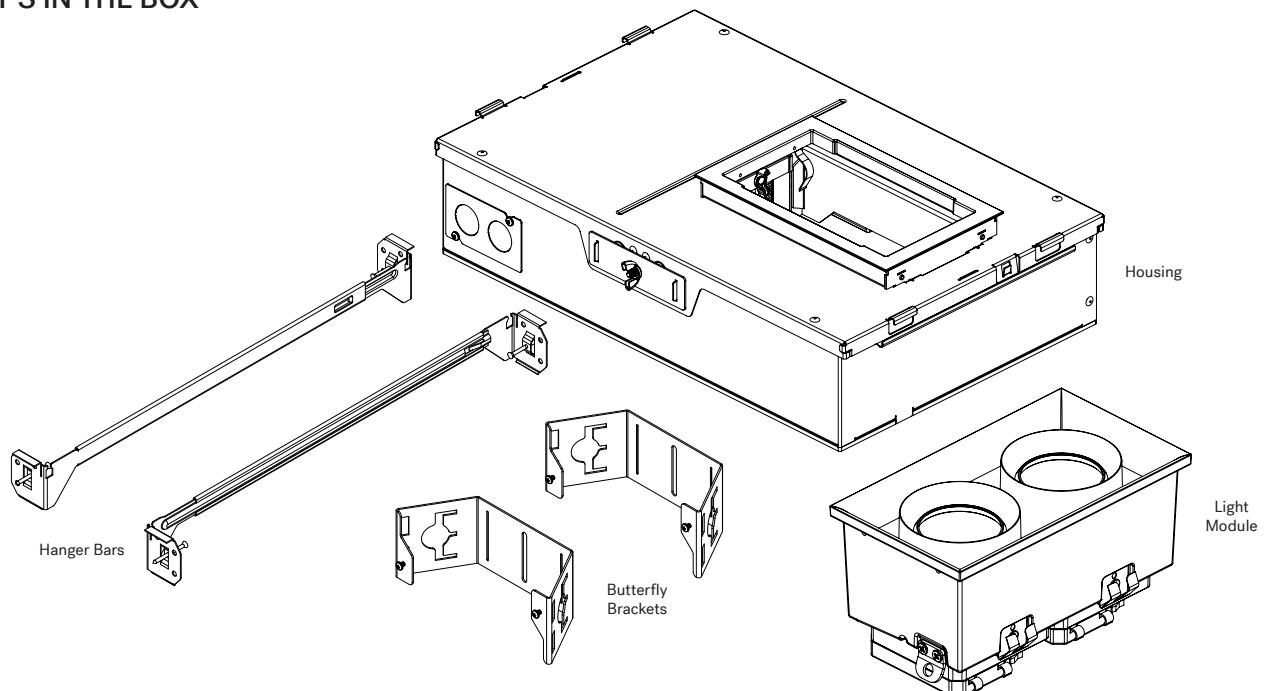


FIG-00038 Revised 02/03/26

1 of 9

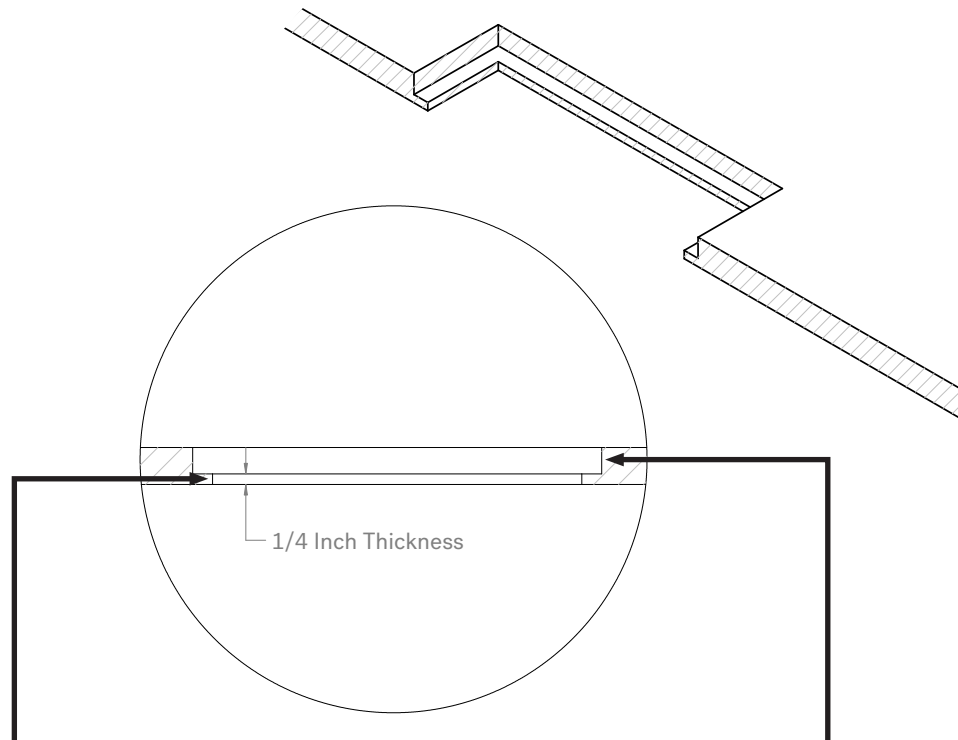
GYROSHIFT MULTIPLES - WOOD CEILING - INSTALLATION INSTRUCTIONS

PREPARATION

Wood Ceiling Cutout

Consult the ceiling cutout table below to determine your application ceiling cutout requirements.

- Ceiling needs to be prepared with a larger hole cut above a smaller hole to create the trimless effect.
- One method is to cut the larger hole in the ceiling and the smaller hole in laminate and place the laminate over the hole on the ceiling.
- Another method is to cut the smaller hole and create the larger space above it using a router.
- Thickness of material around small Thru-Hole must be 1/4 inch.



Size	Thru-Hole (Small Hole)			
	Length (mm)	Width (mm)	Length (in)	Width (in)
S2-1L	93	93	3-11/16	3-11/16
S2-2L	163	93	6-7/16	3-11/16
S2-3L	233	93	9-3/16	3-11/16
S2-4L	303	93	11-15/16	3-11/16
S2-4S	163	163	6-7/16	6-7/16
S3-1L	123	123	4-13/16	4-13/16
S3-2L	223	123	8-3/4	4-13/16
S3-3L	323	123	12-11/16	4-13/16
S3-4L	423	123	16-5/8	4-13/16
S3-4S	223	223	8-3/4	8-3/4

Size	Pocket (Large Hole)			
	Length (mm)	Width (mm)	Length (in)	Width (in)
S2 1L	118	118	4-5/8"	4-5/8
S2 2L	188	118	7-3/8"	4-5/8
S2 3L	258	118	10-3/16	4-5/8
S2 4L	328	118	12-15/16	4-5/8
S2 4S	188	188	7-3/8	7-3/8
S3 1L	148	148	5-13/16	5-13/16
S3 2L	248	148	9-3/4	5-13/16
S3 3L	348	148	13-11/16	5-13/16
S3 4L	448	148	17-5/8	5-13/16
S3 4S	248	248	9-3/4	9-3/4

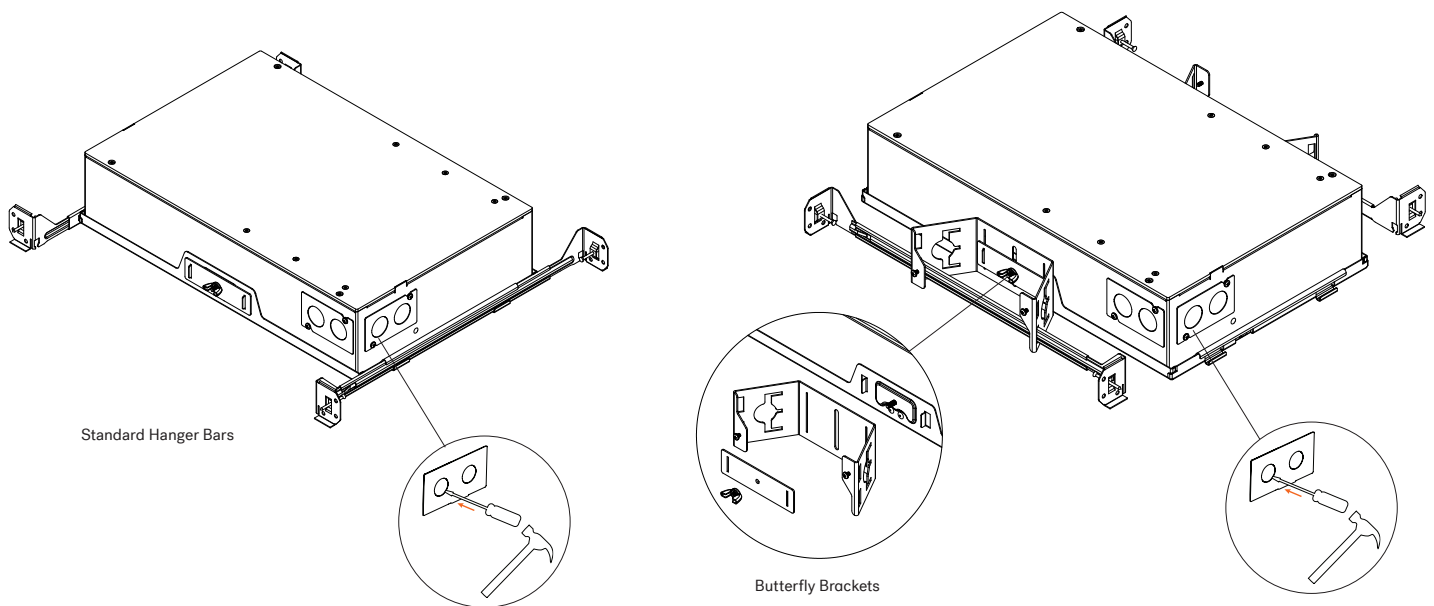
GYROSHIFT MULTIPLES - WOOD CEILING - INSTALLATION INSTRUCTIONS

Determine Housing Mounting Method

- **Standard hanger bars:** Secure the housing to ceiling joists or suspended ceiling frames (T-bars). Install the hanger bars in the frame slots, oriented as shown.
- **Butterfly Brackets:** Secure the housing using C-channel or conduit. To install the brackets, remove the wingnut and lock plate, mount the brackets on the housing, then re-attach the lock plate and wing nut. Adjust the vertical position of the housing by sliding the bracket up or down. Tighten the wingnut to lock the vertical position.

Remove Knock-Out(s)

Remove knock-out(s) where needed with a flat-head screwdriver and hammer.

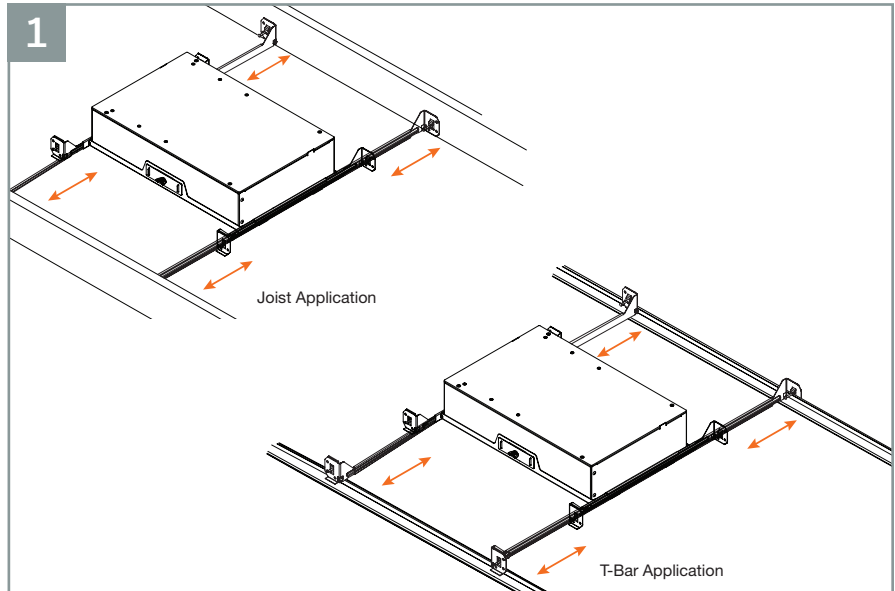


GYROSHIFT MULTIPLES - WOOD CEILING - INSTALLATION INSTRUCTIONS

INSTALLATION

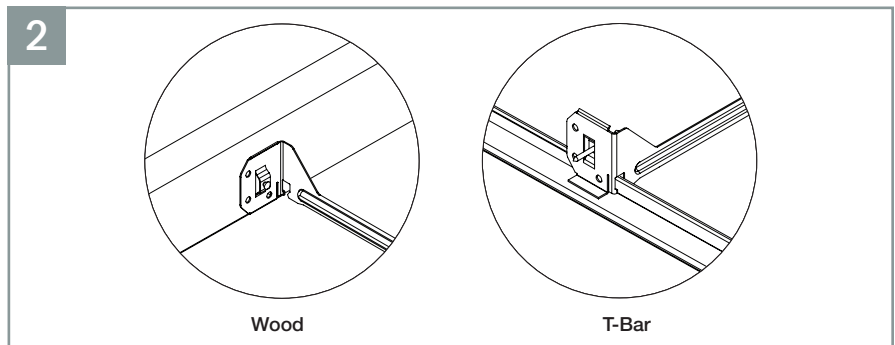
STEP 1 - Hanger Bar Adjustment

- Adjust the hanger bars to fit between joists (For suspended ceiling, remove the required tile).



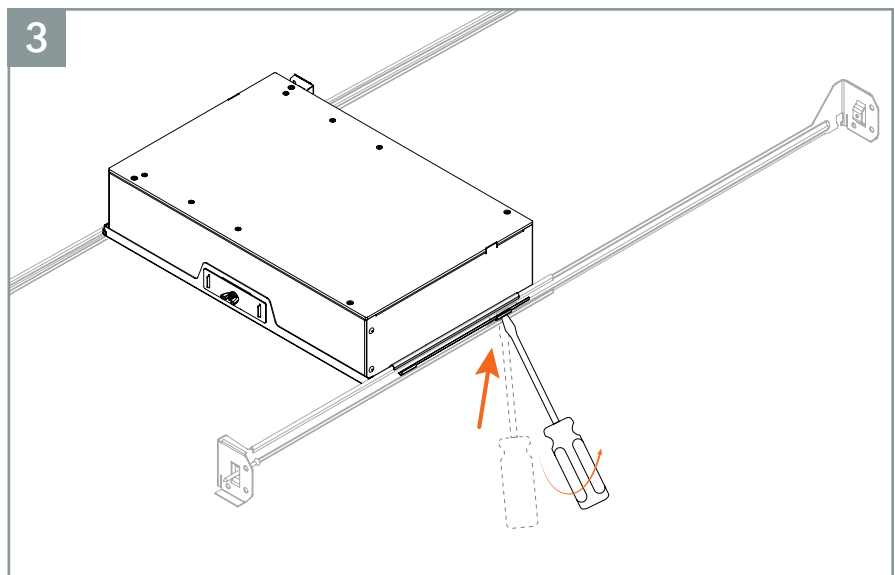
STEP 2 - Secure Hanger Bars

- For wood joists, line up the bottom of the hanger bars to the bottom of the joists and nail the ends of the hanger bars to the joists.
- For suspended ceiling (T-Bar), snap the hanger bars in place on the suspended ceiling T-Bar.



STEP 3 - Secure System

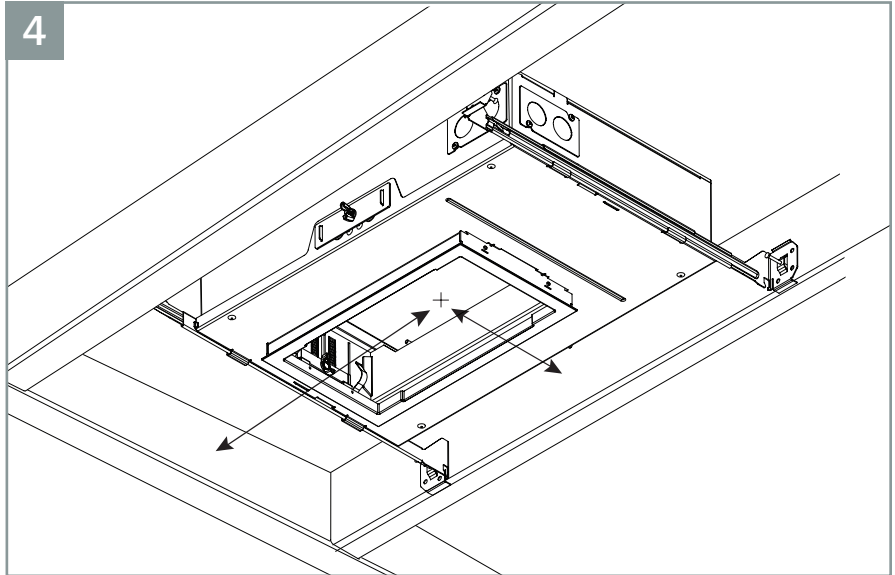
- Slide the housing to the desired position and use a flat head screwdriver to tilt the locking tabs into the hanger bars until system is secure.



GYROSHIFT MULTIPLES - WOOD CEILING - INSTALLATION INSTRUCTIONS

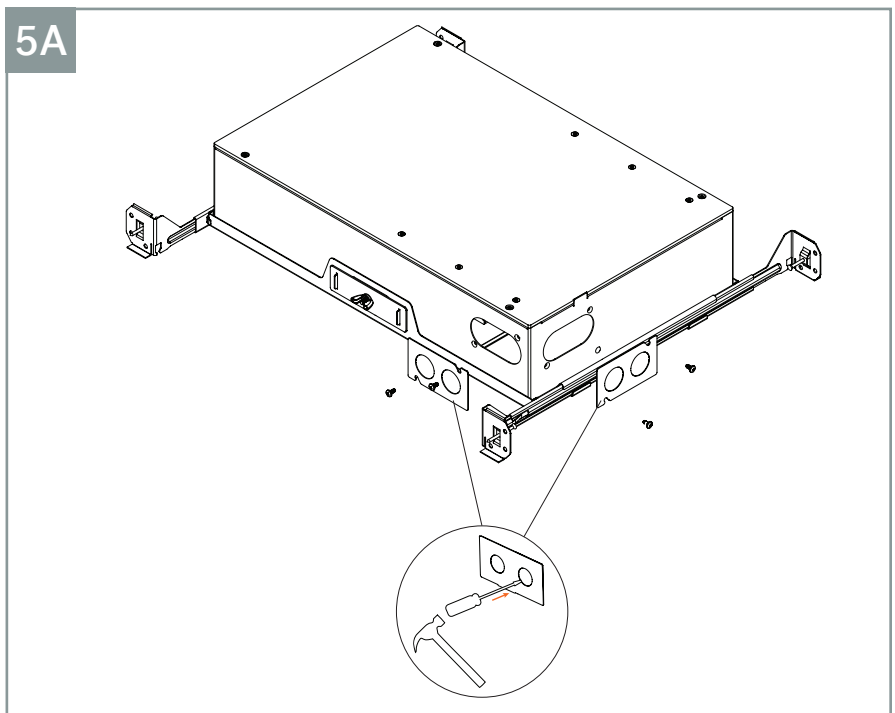
STEP 4 - Position Measurement

- Measure and mark the location of the pan hole from wood joists/T-Bars.



STEP 5A - Electrical Connection

- If not already completed, use a flathead screwdriver and hammer to punch out knock-out(s).
- Remove Access panel using a #1 Phillips screwdriver.
- Using a UL listed conduit connector secure connector to the knock-out opening, passing supply wires through connector.

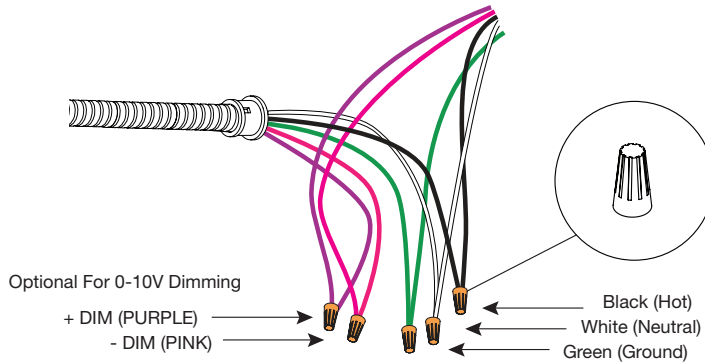


GYROSHIFT MULTIPLES - WOOD CEILING - INSTALLATION INSTRUCTIONS

STEP 5B - Wiring Diagrams

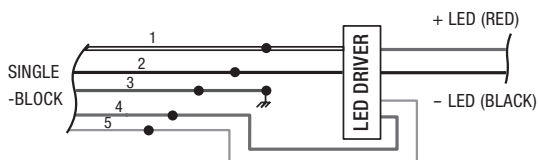
- Connect supply wires using approved wire nuts to the Driver using the wiring diagrams shown.
- Reattach access panel.

5B



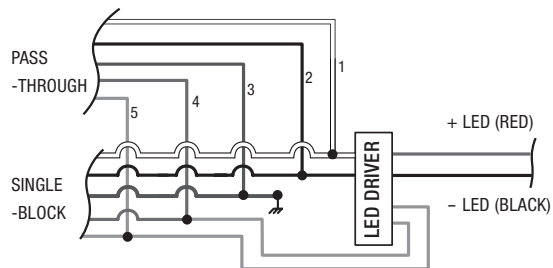
TRI-DIMMING

For Single-Block Connection



- 1/ NEUTRAL (WHITE)
- 2/ LINE (HOT) - (BLACK)
- 3/ GROUND (GREEN)
- 4/ + DIM (PURPLE)
- 5/ - DIM (PINK)

For Pass-Through Connection

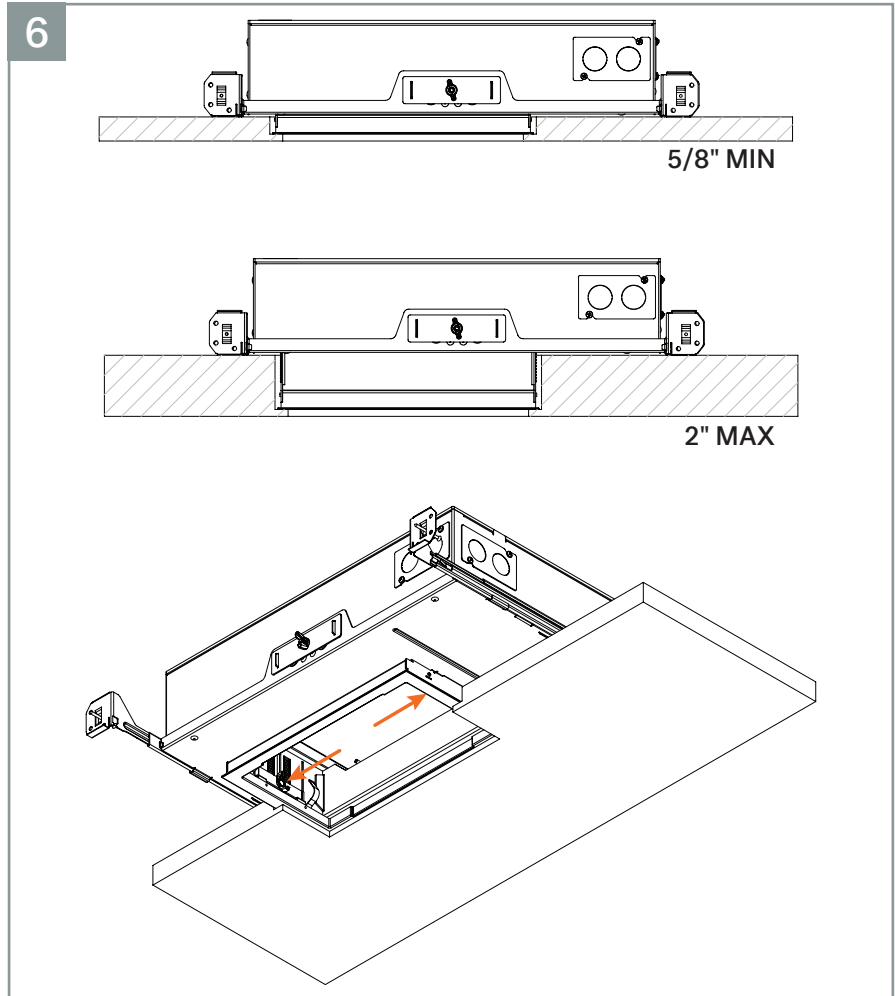


- 1/ NEUTRAL (WHITE)
- 2/ LINE (HOT) - (BLACK)
- 3/ GROUND (GREEN)
- 4/ + DIM (PURPLE)
- 5/ - DIM (PINK)

GYROSHIFT MULTIPLES - WOOD CEILING - INSTALLATION INSTRUCTIONS

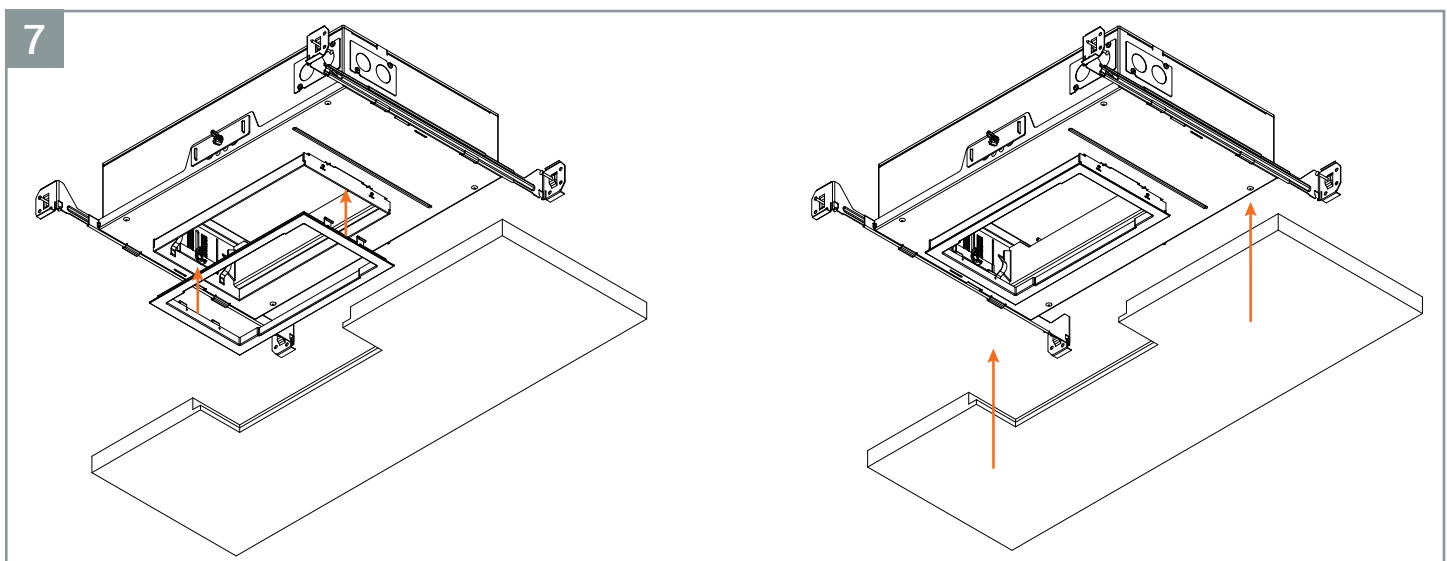
STEP 6 - Z Adjust

- Loosen two wing nut screws
- Adjust collar to be flush with ceiling
- Tighten two wing nut screws to lock



STEP 7 - Ceiling Install

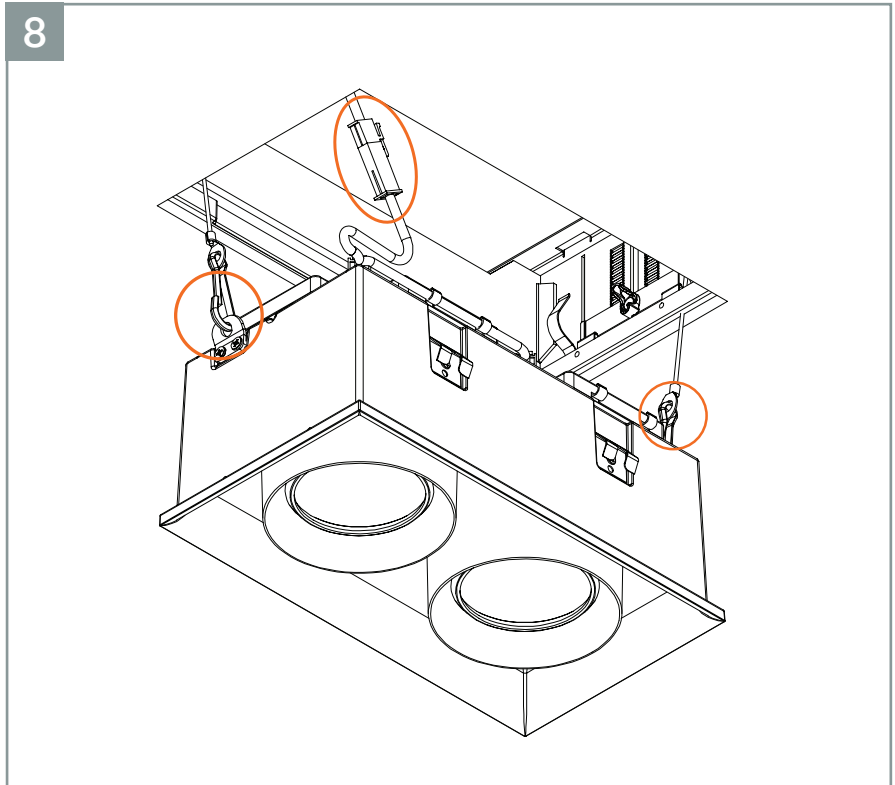
- Install trim into collar
- Raise ceiling into position



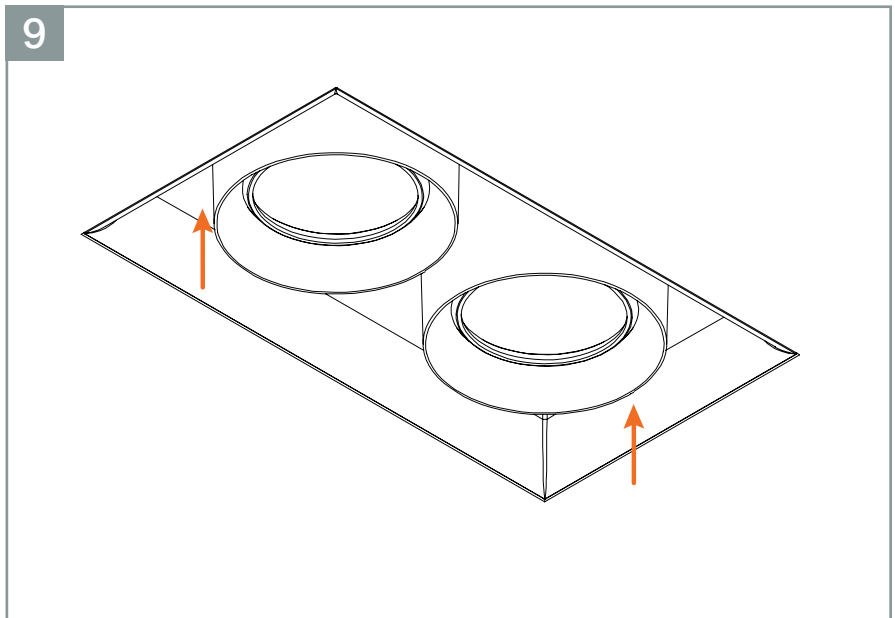
GYROSHIFT MULTIPLES - WOOD CEILING - INSTALLATION INSTRUCTIONS

STEP 8 - Attach Clips and Power

- Attach Safety Chain(s) with Clips(s) and connect Power Cable.



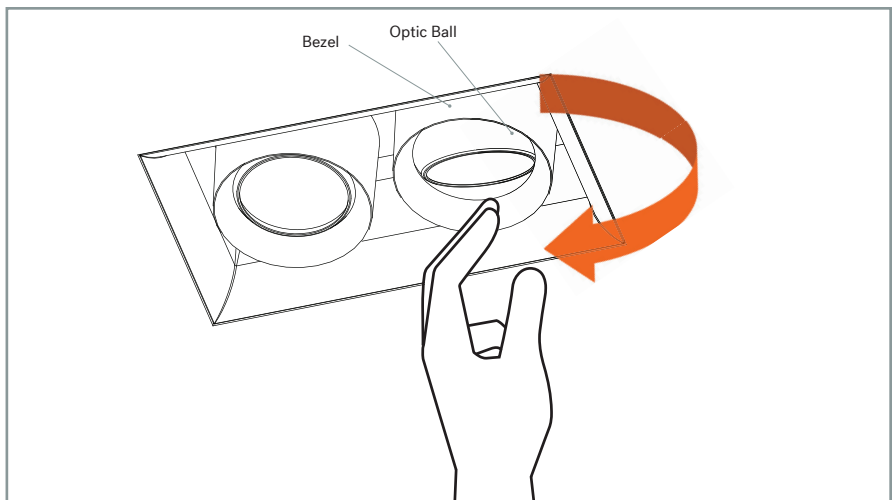
STEP 9 - Install Light Module



GYROSHIFT MULTIPLES - WOOD CEILING - INSTALLATION INSTRUCTIONS

Adjust Optic

- Unscrew Bezel
- PUSH on Optic Ball to adjust
- Screw Bezel back in tight



Media Install

- Unscrew Bezel from Head Base
- Unscrew Optic Lock from Optic Ball
- Install Media in front of Optic
- Install reverse of removal

