

GYROSHIFT MULTIPLES - STANDARD & TRIMLESS - INSTALLATION INSTRUCTIONS

READ AND FOLLOW ALL SAFETY INSTRUCTIONS!
SAVE THESE INSTRUCTIONS AND DELIVER TO OWNER AFTER INSTALLATION.

⚠ WARNING: RISK OF ELECTRIC SHOCK

- Before installation or servicing DISCONNECT POWER BY SHUTTING OFF THE CIRCUIT breakers both to the outlet box and to its associated wall switch.
- Installation and service of luminaires should be performed by a qualified licensed electrician in accordance with all local and National Electrical Codes.
- Do not install damaged product.
- Verify that supply voltage is correct by comparing it with the luminaire label information.
- All wiring connections should be capped with UL approved wire connectors.

⚠ WARNING: RISK OF INJURY

- Allow luminaire to cool before servicing.
- Follow all manufacturer's warning and restrictions for driver type, mounting locations, replacement and recycling.
- Wear safety glasses and gloves when installing, maintaining or servicing.
- Avoid direct eye exposure to the light source while it is on.

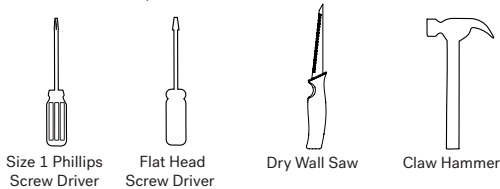
⚠ RISK OF PRODUCT DAMAGE

- Never connect components under load.
- Do not touch the yellow surface of the LED as it may damage the light engine.

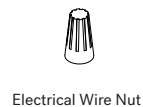
⚠ WARNING: RISK OF FIRE

- Do not separate any other wires that may be in the box.
- Do not damage the insulation of existing wiring.
- In regular circumstances the BLACK wire will be the "Hot" lead and the WHITE wire will be the "Neutral" or "Common" lead. A GREEN or BARE COPPER wire is the "Ground." In older buildings, it is always good practice to reconfirm the polarity of the wiring.

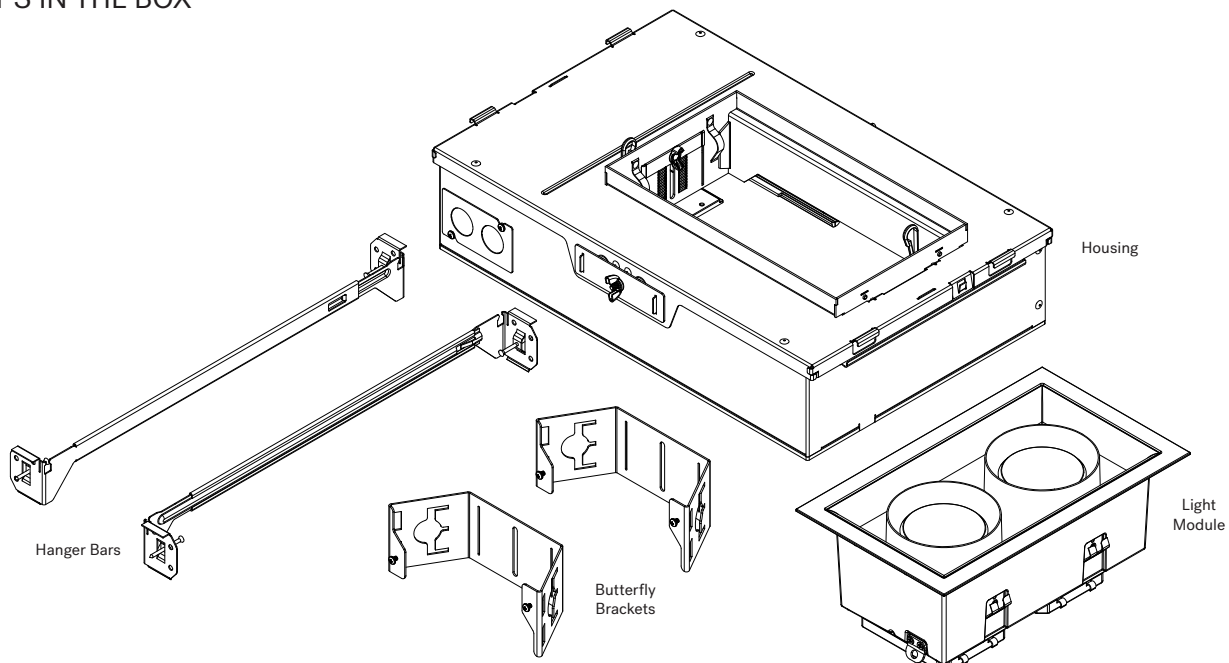
TOOLS REQUIRED



ACCESSORIES REQUIRED



WHAT'S IN THE BOX

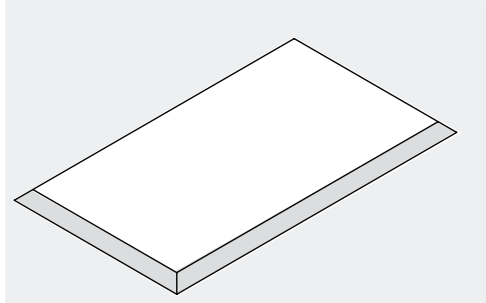


GYROSHIFT MULTIPLES - STANDARD & TRIMLESS - INSTALLATION INSTRUCTIONS

PREPARATION

Measure Before You Cut

Consult the ceiling cutout table below to determine your application ceiling cutout requirements.



FLANGED/TRIMLESS

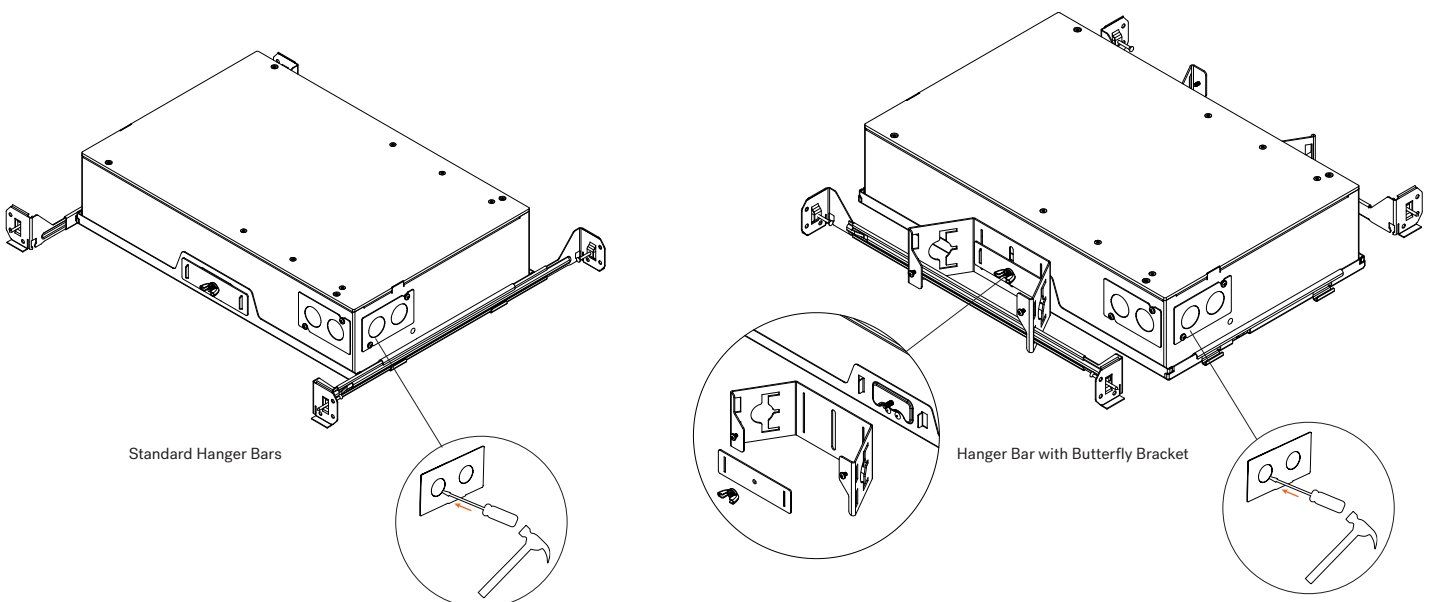
Size	Length IN	Width IN	Length MM	Width MM
S2-1L	4-1/8	4-1/8	105	105
S2-2L	6-7/8	4-1/8	175	105
S2-3L	9-5/8	4-1/8	245	105
S2-4L	12-3/8	4-1/8	315	105
S2-4S	6-7/8	6-7/8	175	175
S3-1L	5-5/16	5-5/16	135	135
S3-2L	9-1/4	5-5/16	235	135
S3-3L	13-3/16	5-5/16	335	135
S3-4L	17-1/8	5-5/16	435	135
S3-4S	9-1/4	9-1/4	235	235

Determine Housing Mounting Method

- Standard hanger bars: Secure the housing to ceiling joists or suspended ceiling frames (T-bars). Install the hanger bars in the frame slots, oriented as shown.
- Butterfly Brackets: Secure the housing using C-channel or conduit. To install the brackets, remove the wingnut and lock plate, mount the brackets on the housing, then re-attach the lock plate and wing nut. Adjust the vertical position of the housing by sliding the bracket up or down. Tighten the wingnut to lock the vertical position.

Remove Knock-Out(s)

Remove knock-out(s) where needed with a flat-head screwdriver and hammer.

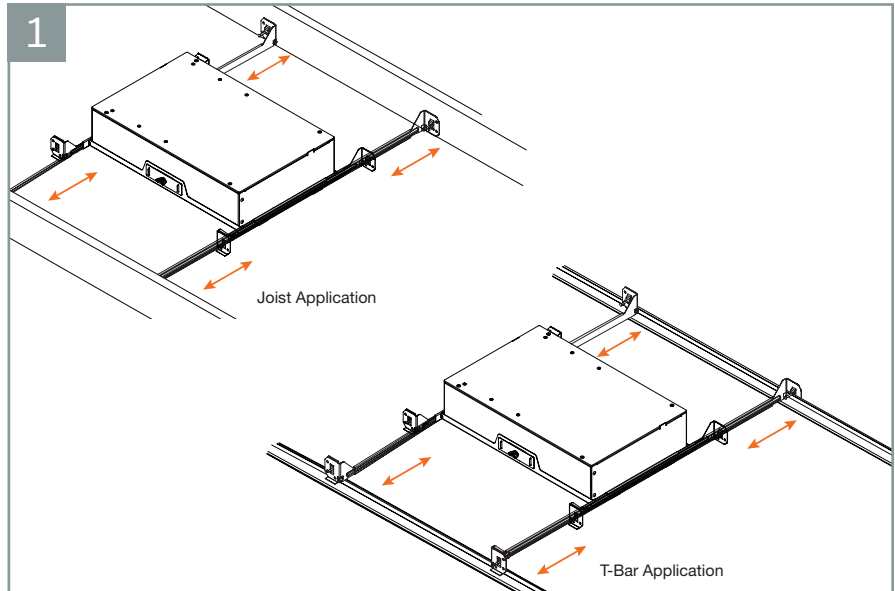


GYROSHIFT MULTIPLES - STANDARD & TRIMLESS - INSTALLATION INSTRUCTIONS

INSTALLATION

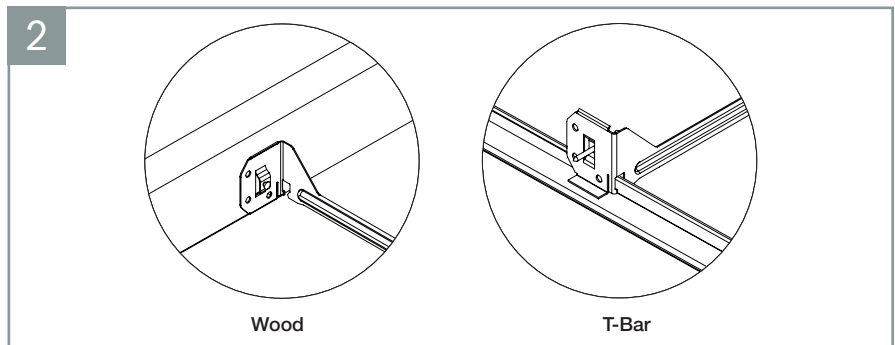
STEP 1 – Hanger Bar Adjustment

- Adjust the hanger bars to fit between joists
(For suspended ceiling, remove the required tile).



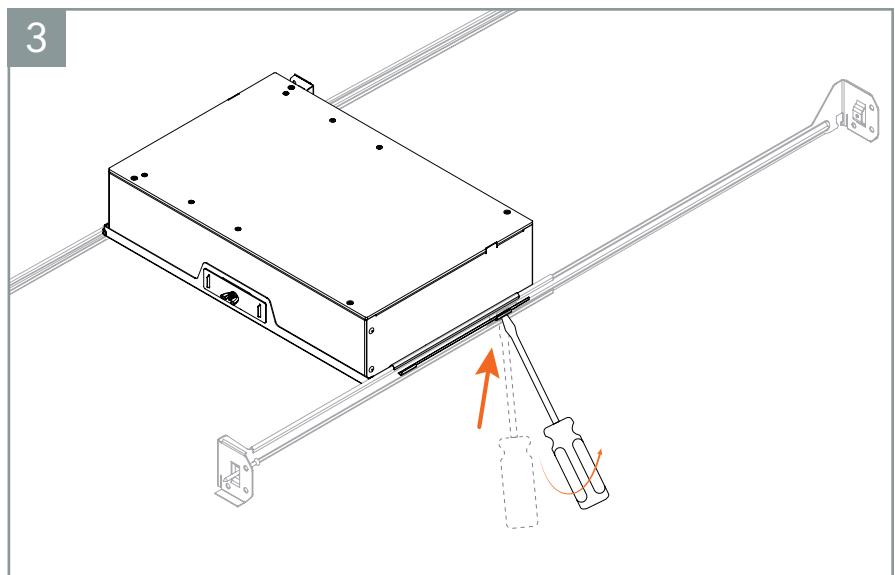
STEP 2 – Secure Hanger Bars

- For wood joists, line up the bottom of the hanger bars to the bottom of the joists and nail the ends of the hanger bars to the joists.
- For suspended ceiling (T-Bar), snap the hanger bars in place on the suspended ceiling T-Bar.



STEP 3 – Secure System

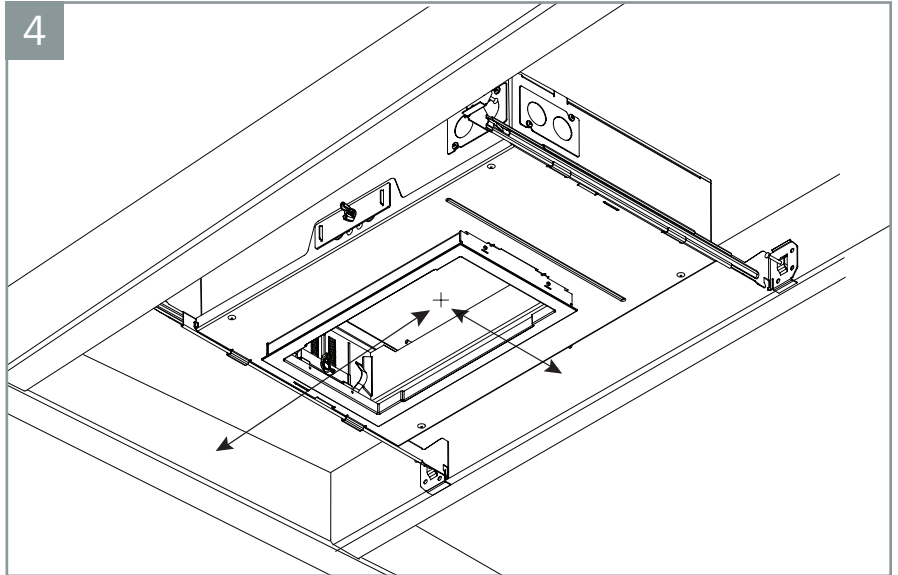
- Slide the housing to the desired position and use a flat head screwdriver to tilt the locking tabs into the hanger bars until system is secure.



GYROSHIFT MULTIPLES - STANDARD & TRIMLESS - INSTALLATION INSTRUCTIONS

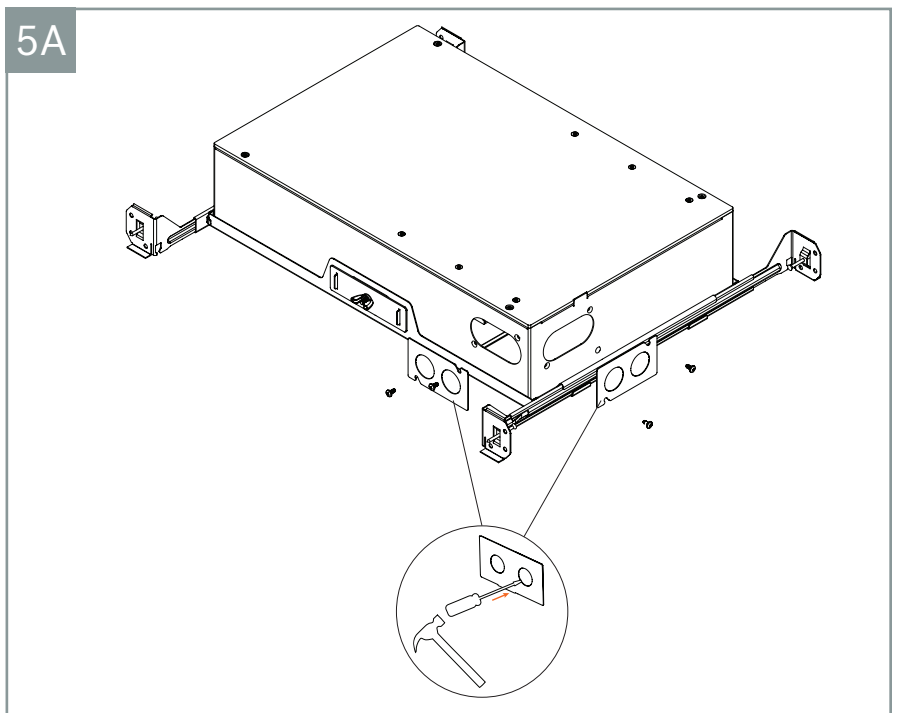
STEP 4 – Position Measurement

- Measure and mark the location of the pan hole from wood joists/T-Bars.



STEP 5A – Electrical Connection

- If not already completed, use a flathead screwdriver and hammer to punch out knock-out(s).
- Remove Access panel using a #1 Phillips screwdriver.
- Using a UL listed conduit connector secure connector to the knock-out opening, passing supply wires through connector.

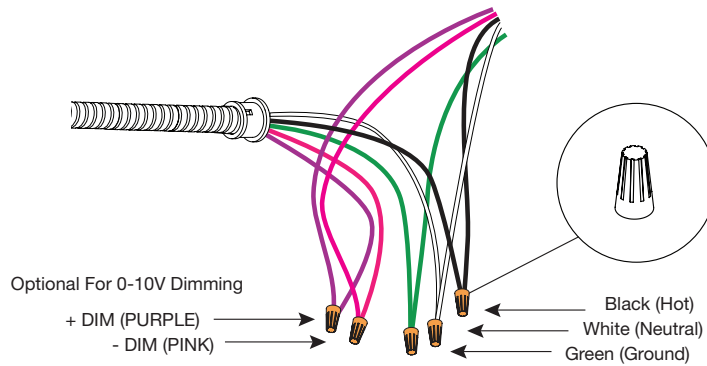


GYROSHIFT MULTIPLES - STANDARD & TRIMLESS - INSTALLATION INSTRUCTIONS

STEP 5B – Wiring Diagrams

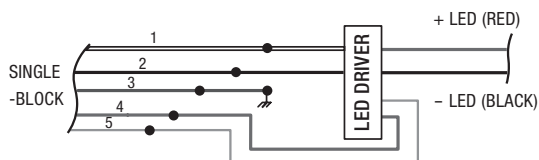
- Connect supply wires using approved wire nuts to the Driver using the wiring diagrams shown.
- Reattach access panel.

5B



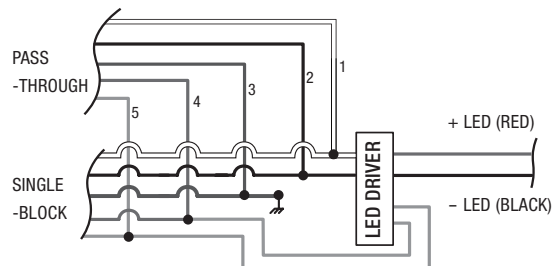
TRI-DIMMING

For Single-Block Connection



- 1/ NEUTRAL (WHITE)
- 2/ LINE (HOT) - (BLACK)
- 3/ GROUND (GREEN)
- 4/ + DIM (PURPLE)
- 5/ - DIM (PINK)

For Pass-Through Connection



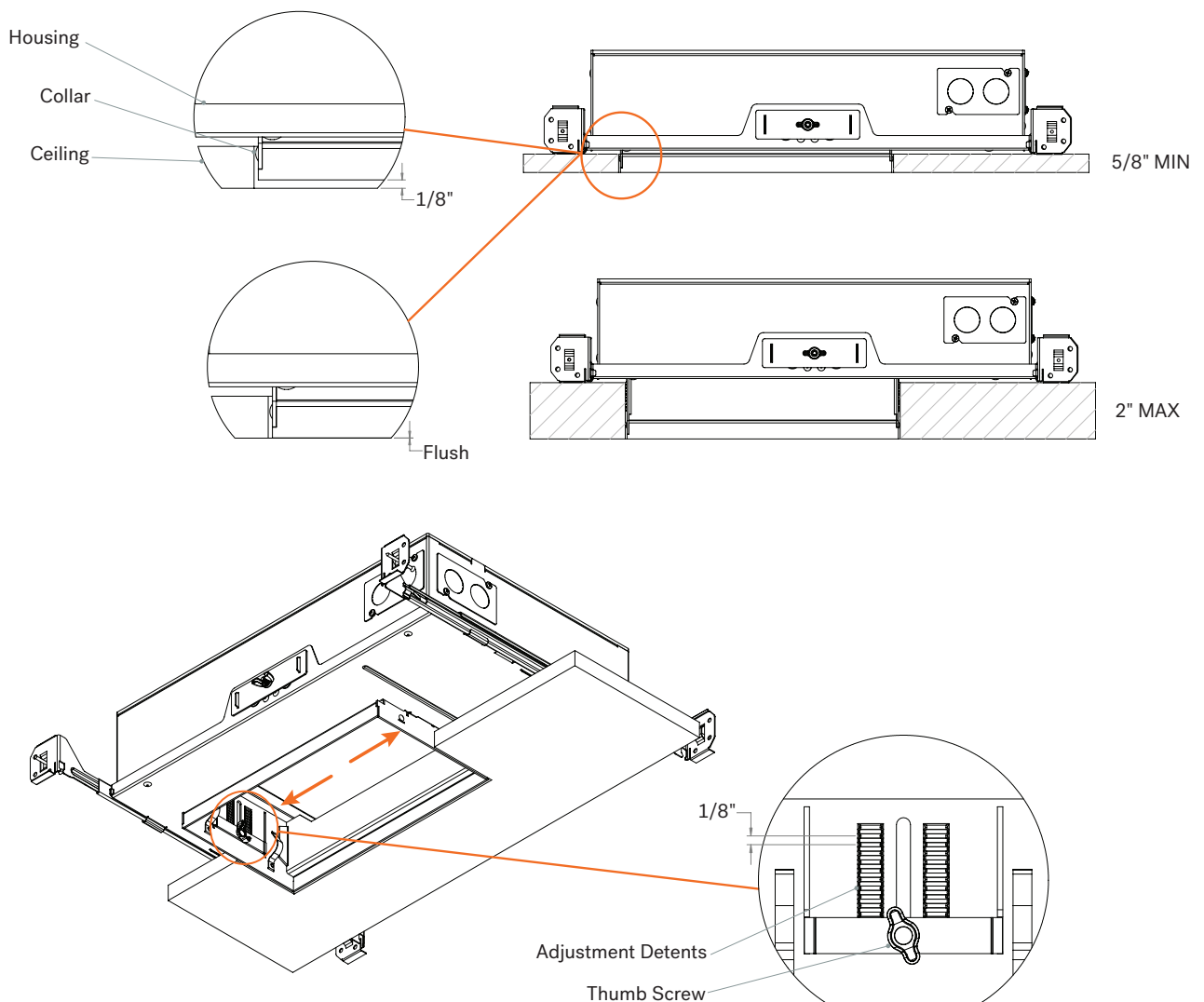
- 1/ NEUTRAL (WHITE)
- 2/ LINE (HOT) - (BLACK)
- 3/ GROUND (GREEN)
- 4/ + DIM (PURPLE)
- 5/ - DIM (PINK)

GYROSHIFT MULTIPLES - STANDARD & TRIMLESS - INSTALLATION INSTRUCTIONS

STEP 6 – Z Adjust

- Loosen two thumb screws
- Adjust collar to be within 1/8" above the ceiling plane
Note: The collar has detents every 1/8" from 5/8" to 2" ceiling thicknesses
- Tighten the two thumb screws to lock the collar

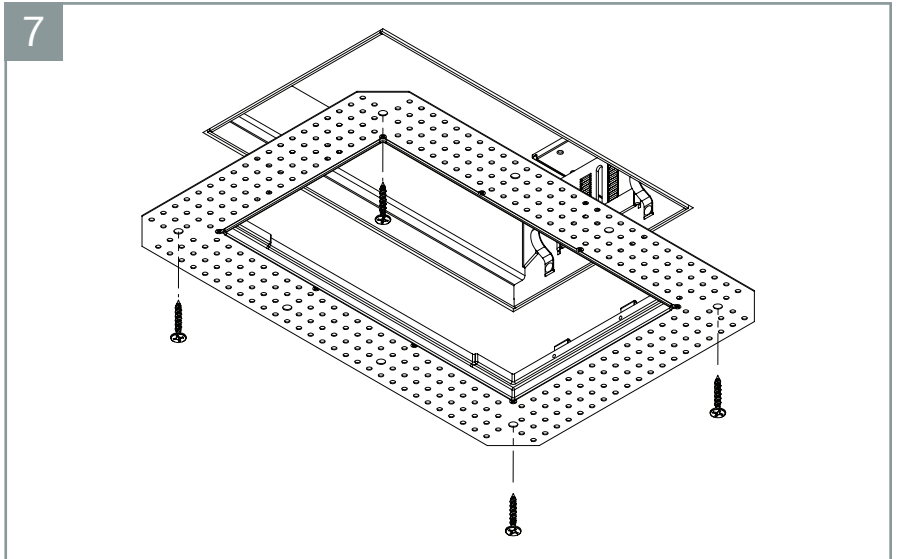
6



GYROSHIFT MULTIPLES - STANDARD & TRIMLESS - INSTALLATION INSTRUCTIONS

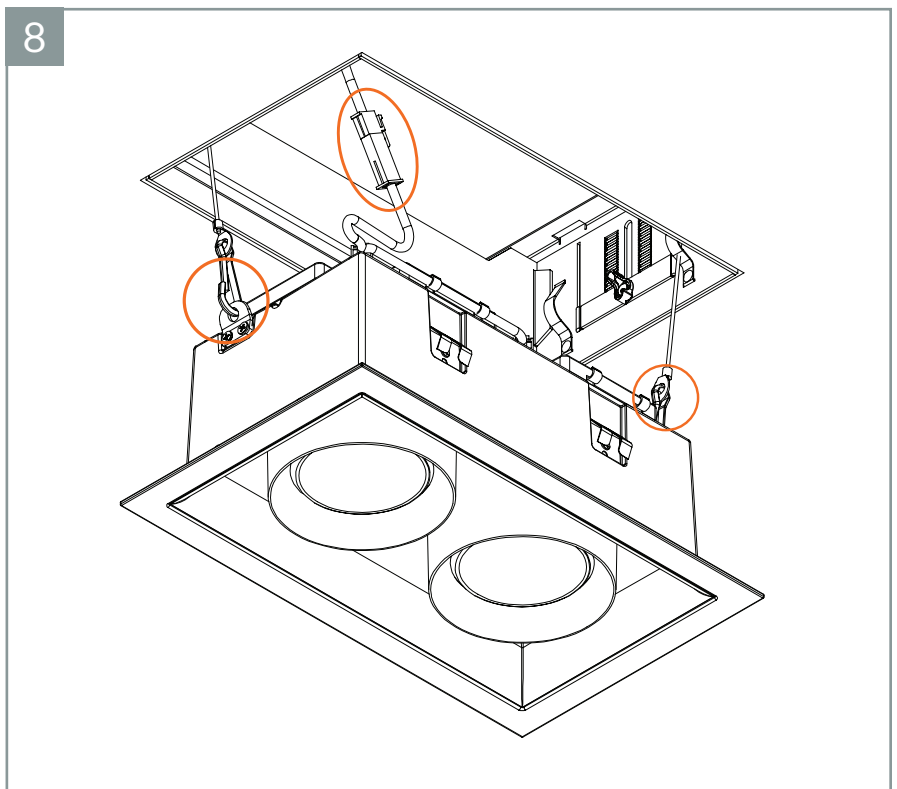
STEP 7 – For Trimless

- Ensure to attach the mud guard before mudding (four screws are supplied).
- With joint knife, apply mud to the plate. Ensure no mud goes beyond the center rim.
- With a block sander, smooth out bumps or unevenness. Repeat until ceiling is smooth.
- Paint ceiling.



STEP 8 – Attach Clips and Power

- Attach Safety Chain(s) with Clips(s) and connect Power Cable.

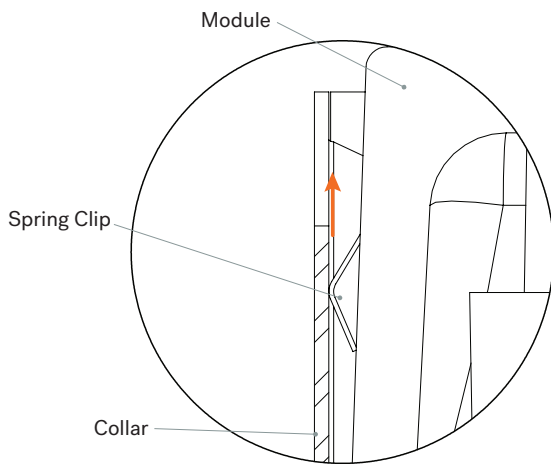
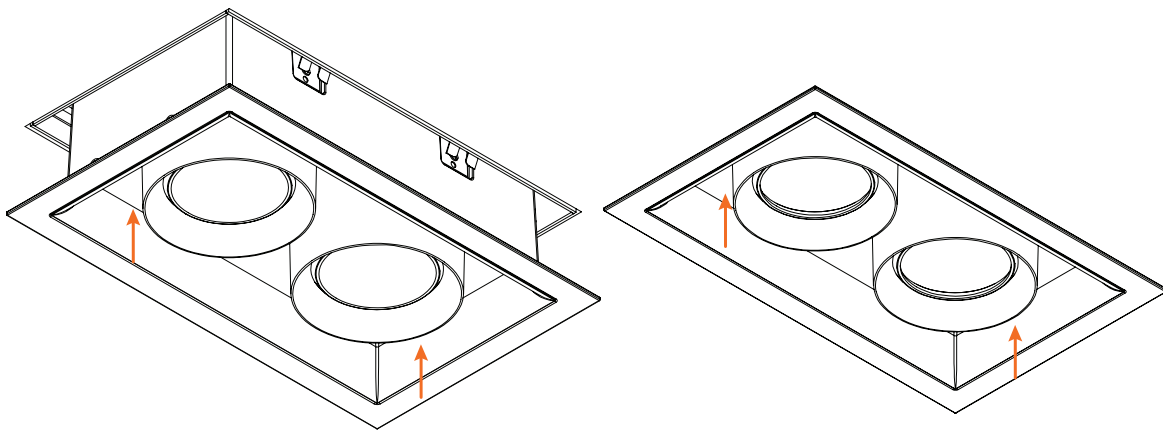


GYROSHIFT MULTIPLES - STANDARD & TRIMLESS - INSTALLATION INSTRUCTIONS

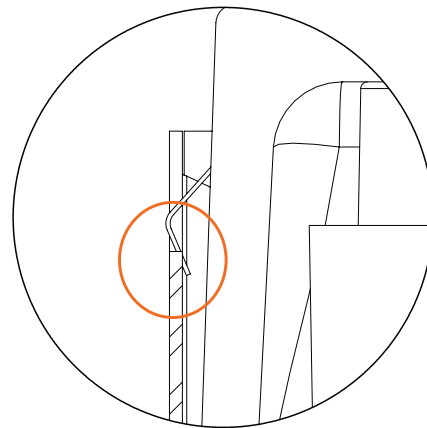
STEP 9 – Install Light Module

- Module should snap into place. This ensures light module is secured as shown in diagram A and B
- If the trim does not suck up flush to the ceiling when installed, adjust the collar height in 1/8" increments and reinstall the trim.

9



A: Module partially installed

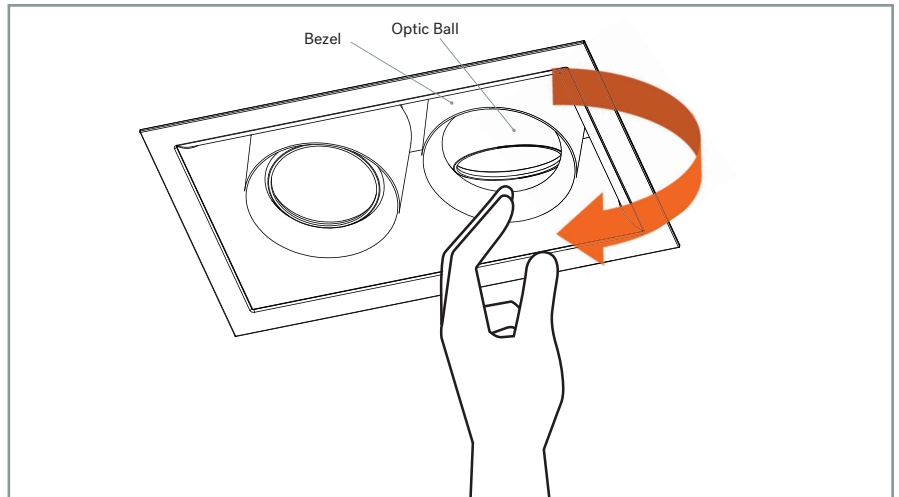


B: Module fully installed

GYROSHIFT MULTIPLES - STANDARD & TRIMLESS - INSTALLATION INSTRUCTIONS

Adjust Optic

- Unscrew Bezel
- PUSH on Optic Ball to adjust
- Screw Bezel back in tight



Media Install

- Unscrew Bezel from Head Base
- Unscrew Optic Lock from Optic Ball
- Install Media in front of Optic
- Install reverse of removal

