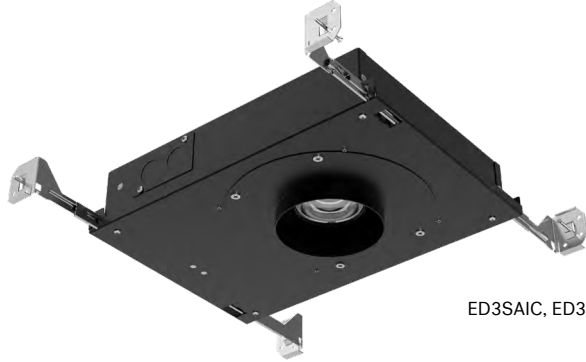


Project: _____

Type: _____

Note: _____

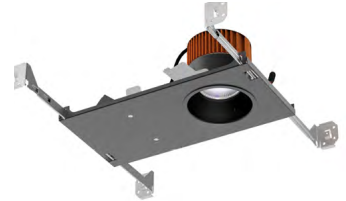
ECO 3" LED DOWNLIGHT



ED3SAIC, ED3LSAIC



ED3RM, ED3LRIC



ED3NC, ED3LNIC

LED LIGHT ENGINE	
RATED WATTAGES	21W, 15W, 12W
DELIVERED LUMENS	Up to 2360 lm
EFFICACY	Up to 132 LPW
CCT @ 90CRI	2700K, 3000K, 3500K, 4000K, Warm Dim
COLOR QUALITY	90+ CRI, 2-Step SDCM
LED LIFETIME	>55,000 hours @ L80

POWER SUPPLY	
INPUT VOLTAGE	120/277V 50/60Hz
DIMMING	TRIAC, ELV and 0-10V, dims to 1%
SERVICABILITY	Below ceiling access

DELIVERED LUMENS MATRIX						
ED3 SAIC (19.9W)	10°	30°	50°	80°	WW-R	WW-S
2700K (90CRI)	2013 lm	2104 lm	1921 lm	1357 lm	1383	1215
3000K (90CRI)	2143 lm	2240 lm	2044 lm	1445 lm	1472	1293
3500K (90CRI)	2205 lm	2304 lm	2103 lm	1486 lm	1514	1330
4000K (90CRI)	2258 lm	2360 lm	2154 lm	1522 lm	1551	1363

TRIM OPTIONS

- Fixed or Adjustable
- Round or Square
- Standard or Trimless
- Wall Wash
- Wet Location Regressed
- Dead Front

TRIM COLORS

- White
- Black
- Champagne
- Champagne w/White Flange
- Black w/White Flange
- Silver w/White Flange

ED3 NIC, RIC (13.4W)	10°	30°	50°	80°	WW-R	WW-S
Warm Dim (98 CRI, R9>90)	868 lm	938 lm	846 lm	604 lm	646	564

HOUSING

- New Construction includes (2) galvanized steel adjustable hanger bars
- Remodel option available
- 5/8"-2" ceiling thickness SAIC, 1/2"-2" ceiling thickness NC and RM
- Min Plenum Height: 2 1/2" Shallow SAIC, 3 1/2" RM/NC/RIC/NIC models with ST Trim
- Ceiling Material: Drywall, T-bar grid
- Steel junction box with up to (4) 1/2" knockouts
- ASTM E283 Air Tight compliant
- SAIC models are CCEA compliant (Note: polycell spray-in foam insulation must be kept 3" from housing)

ED3 SAIC (19.4W)	10°	30°	50°	80°	WW-R	WW-S
Warm Dim (98 CRI, R9>90)	1251 lm	1352 lm	1220 lm	871 lm	932	813

LISTING/WARRANTY

- cULus Listed
- UL Listed for Damp Location (All Styles)
- IC Rated and Non IC Rated Available
- CCEA Approved (SAIC Models)
- Five (5) years limited warranty
- UL Listed for Wet Location (Wet Location Trim Style)
- CA Title 24-JA8 Compliant (SAIC, NIC & RIC Models)
- ASTM E283 Certified Airtight
- Compliant with CEC Title 24 - JA10 flicker requirements

ED3L (11.4W)	10°	30°	50°	80°	WW-R	WW-S
2700K (90CRI)	1279 lm	1337 lm	1220 lm	862 lm	878	772
3000K (90CRI)	1362 lm	1423 lm	1299 lm	918 lm	935	822
3500K (90CRI)	1401 lm	1464 lm	1336 lm	944 lm	962	845
4000K (90CRI)	1435 lm	1499 lm	1368 lm	967 lm	985	866

SILENT VU™ OPTICS TECHNOLOGY	
OPTICS	50° Installed, 10°, 30°, 80° available
ADJUSTABLE	0° to 45° tilt (Adjustable housings only)
MEDIA	Clear, Solite, Frosted, Linear Spread, Hex Louver



Project: _____

Type: _____

Note: _____

ECO 3" LED DOWNLIGHT

ORDER MATRIX

ED3

ECO 3" HOUSING + LIGHT ENGINE ORDER MATRIX (Example: ED3SAIC-309050-21S)

HOUSING BASE		LED PERFORMANCE			DRIVER ASSEMBLY	
FAMILY APERTURE	INSTALLATION TYPE	CCT	CRI	OPTIC	WATTAGE	LED DIMMING DRIVER
ED3 ECO 3"	SAIC Shallow Plenum Adjustable IC	-27 2700K	90 90 CRI	50 50° Flood Installed	-21 19.9W	S³ Universal Dimming Driver (1%-100% 0-10V, TRIAC, ELV, 120V/277V)
	NC New Construction Fixed	-30 3000K		10°, 30°, 80° optics available from the Additional Optics Accessories table below		
	RM Remodel Fixed	-35 3500K				
		-40 4000K				

FAMILY APERTURE	INSTALLATION TYPE	CCT	CRI	OPTIC	WATTAGE	LED DIMMING DRIVER
ED3 ECO 3" Warm Dim	SAIC Shallow Plenum Adjustable IC	-WD 1800K-3000K	98 98 CRI	50 50° Flood Installed	-15¹ 13.4W NIC or RIC Installation Type Only	S³ Universal Dimming Driver (1%-100% 0-10V, TRIAC, ELV, 120V/277V)
	NIC New Construction Fixed IC	Warm Dim	Warm Dim	10°, 30°, 80° optics available from the Additional Optics Accessories table below	-21^{1,2} 19.4W SAIC Installation Type Only	
	RIC Remodel Fixed IC					

1. SAIC Installation Type and Wattage Code -21.
NIC or RIC Installation Type and Wattage Code -15.

2. Wattage Code -21 Title 24 JA-8 compliant only with 10°, 30° or 50° optic installed.
3. TRIAC, ELV dimming for 120V only.

ED3L

ECO 3" HOUSING + LIGHT ENGINE ORDER MATRIX (Example: ED3LSAIC-309050-12S)

HOUSING BASE		LED PERFORMANCE			DRIVER ASSEMBLY	
FAMILY APERTURE	INSTALLATION TYPE	CCT	CRI	OPTIC	WATTAGE	LED DIMMING DRIVER
ED3L ECO 3" LPD	SAIC Shallow Plenum Adjustable IC	-27 2700K	90 90 CRI	50 50° Flood Installed	-12 11.3/11.4W	S¹ Universal Dimming Driver (1%-100% 0-10V, TRIAC, ELV, 120V/277V)
	NIC New Construction Fixed IC	-30 3000K		10°, 30°, 80° optics available from the Additional Optics Accessories table below		
	RIC Remodel Fixed IC	-35 3500K				
		-40 4000K				

1. TRIAC, ELV dimming for 120V only.

Project: _____

Type: _____

Note: _____

ECO 3" LED DOWNLIGHT

ORDER MATRIX

TRIMMED (FLANGED)

ECO 3" DOWNLIGHT TRIM ORDER MATRIX (Example: ED3-RSTWT)

FAMILY APERTURE	TRIM SHAPE	TRIM POSITION	TRIM STYLE	TRIM FINISH
ED3- ECO 3" Flanged	R Round	F Fixed	ST Standard	WT ⁴ White BW ² Black w/White Flange
	S Square	A Adjustable	WR ³ Wet Location Regressed	BK Black SW ² Silver w/White Flange
			WW ² ¹ Wall Wash	CN Champagne CW ² Champagne w/White Flange
			DF ^{1,4} Dead Front	

- DF (Dead Front) and WW2 (Wall Wash) styles only available in F (Fixed) and in flanged trim.
- Color option available in ST (Standard) and WR (Wet Location Regressed) style only.
- WR (Wet Location Regressed) style only available for order in A (Adjustable) and in flanged trim options. Trim is compatible with fixed or adjustable housings.
- DF (Dead Front) styles only available in WT (White).

TRIMLESS MUD KIT (REFLECTOR + MUD PLATE)

ECO 3" DOWNLIGHT TRIMLESS ORDER MATRIX (Example: ED3-KRFSTWT)

FAMILY APERTURE	KIT	TRIM SHAPE	REFLECTOR POSITION	TRIM STYLE	TRIM FINISH
ED3- ECO 3" Trimless	K (Reflector and Mudplate Kit)	R Round	F Fixed	ST SAIC (Shallow Plenum Adjustable housing types only)	WT White
		S ¹ Square	A Adjustable	RM NC (Fixed), RM (Remodel) housing types only	BK Black CN Champagne

- S (Square) and A (Adjustable) not available for RM Reflector Style.

TRIMLESS REFLECTOR

ECO 3" DOWNLIGHT TRIMLESS ORDER MATRIX (Example: ED3-RFTLWT or ED3-RRMTLWT)

FAMILY APERTURE	UNKITTED	TRIM SHAPE	REFLECTOR POSITION	TRIM STYLE	TRIM FINISH
ED3- ECO 3" Trimless	(Blank)	R Round	F Fixed	TL SAIC (Shallow Plenum Adjustable housing types only)	WT White
		S ¹ Square	A Adjustable	RM ^{TL} NC (Fixed), RM (Remodel)	BK Black
			Blank (NC/RM)		CN Champagne

- S (Square) not available for RM Reflector Style.
- * Trimless Reflector Only. Order corresponding Trimless Mud Plate.

TRIMLESS MUD PLATE

ECO 3" DOWNLIGHT MUD PLATE ORDER MATRIX (Example: ED3-R-TL or ED3-RRMTL)

FAMILY APERTURE	UNKITTED	TRIM SHAPE	TRIM STYLE
ED3- ECO 3" Trimless	(Blank)	R Round	TL SAIC (Shallow Plenum Adjustable housing types only)
		S ¹ Square	RM ^{TL} NC (Fixed), RM (Remodel)

- S (Square) not available for RMTL Mud Plate.
- * Trimless Mud Plate Only. Order corresponding Trimless Reflector

ECO 3" LED DOWNLIGHT

ORDER MATRIX

ACCESSORIES

ECO 3" ACCESSORIES FOR ECO, ED3, ED3L, ED3S

ADDITIONAL OPTICS	OPTICAL MEDIA	EMERGENCY OPTIONS
Used With Static White	ED3-CL Clear Lens	EM-1000 25W Remote Inverter
ED3-10-OPTIC 10° Spot	ED3-MP Solite Lens	EM-1002 10W Remote EM Driver, Title 20
ED3-30-OPTIC 30° Narrow Flood	ED3-FR Frosted Lens	EM-1003-CA 35W Remote Inverter, Title 20
ED3-50-OPTIC 50° Flood	ED3-LS Linear Spread Lens	EM-1004 50W Remote Inverter
ED3-80-OPTIC 80° Wide Flood	ED3-HEX^{1,3} Hex Louver	EM-1006 25W Remote Inverter, Title 20
Used With Warm Dim	ED3-MHLDR² Media Holder	
ED3-10-OPTIC-WD 10° Spot		
ED3-30-OPTIC-WD 30° Narrow Flood		
ED3-50-OPTIC-WD 50° Flood		
ED3-80-OPTIC-WD 80° Wide Flood		

1. MHLDR required when using a Hex Louver.

2. MHLDR Required when ordering 2 optical media and only compatible with SAIC & LSAIC.

3. Cannot be used with a second media.

TRIM ACCESSORIES

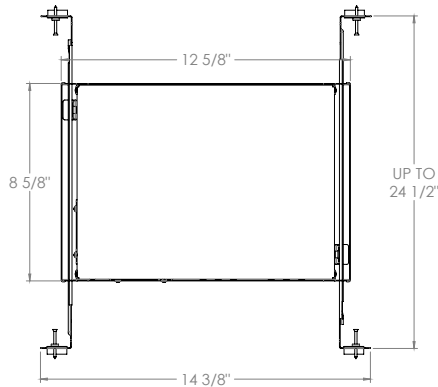
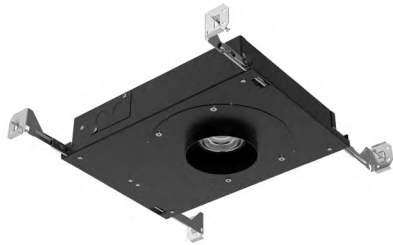
ECO 3" TRIM ACCESSORIES ORDER MATRIX (Example: ED3-R-FMA)

FAMILY APERTURE	STYLE
ED3- ECO 3"	R-FMA Round Flush Mount Adapter
	S-FMA Square Flush Mount Adapter
	TC1 Thick Ceiling Adapter for ceilings 11/16" to 1-1/4"
	TC2 Thick Ceiling Adapter for ceilings 1-5/16" to 2"

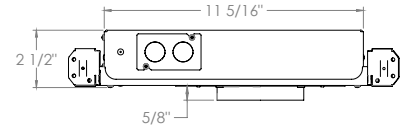
ECO 3" LED DOWNLIGHT

HOUSING AND LIGHT ENGINE LINE DRAWINGS

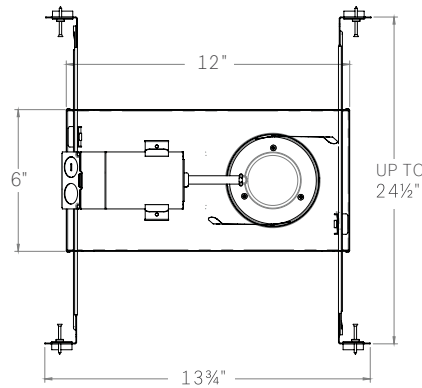
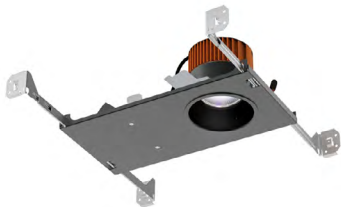
ED3SAIC, ED3LSAIC



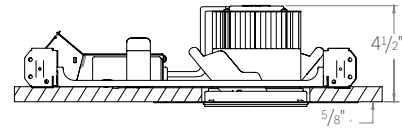
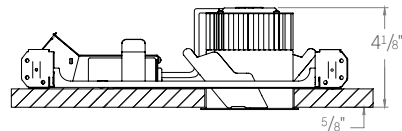
Minimum plenum height 2 1/2"



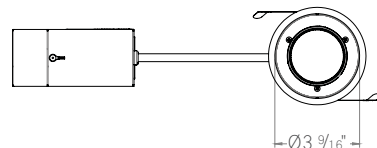
ED3NC, ED3LNIC



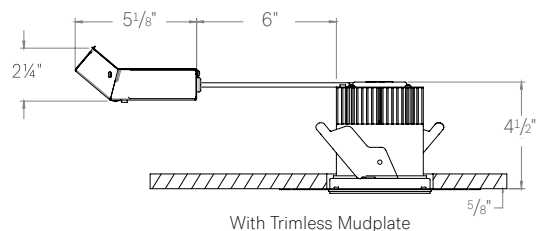
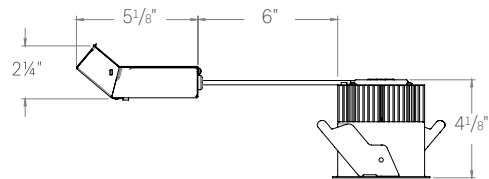
Minimum plenum height 3 1/2" at 5/8" ceiling thickness



ED3RM, ED3LRIC

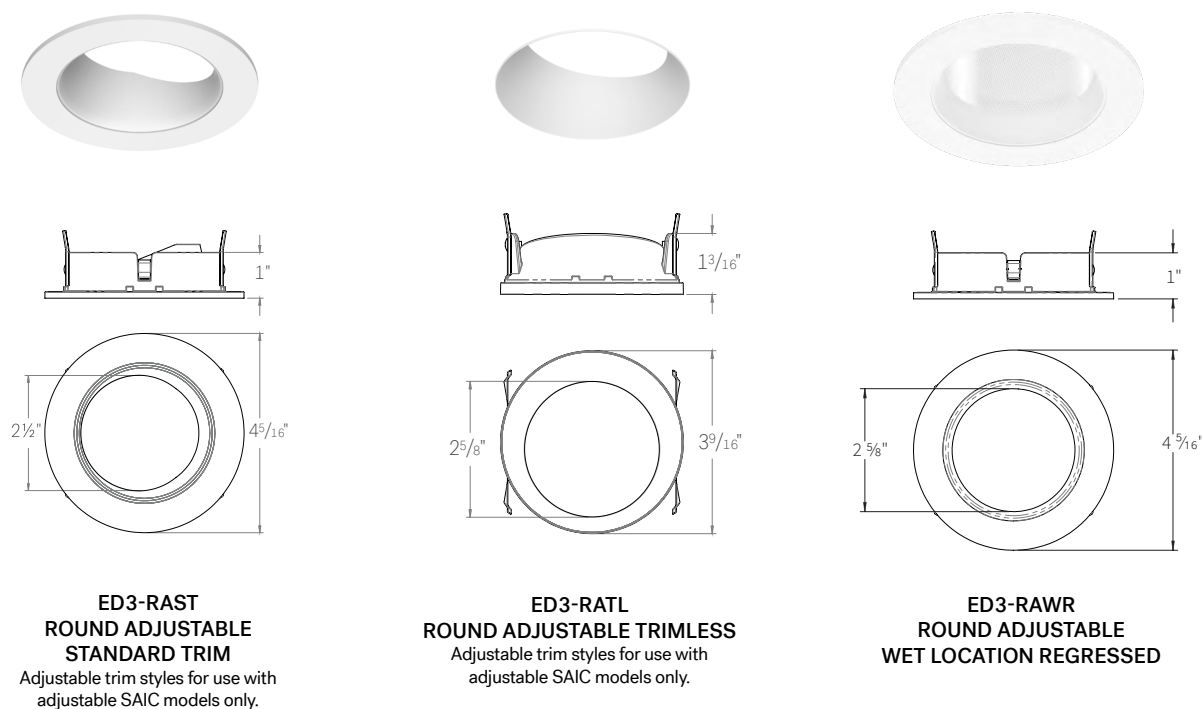
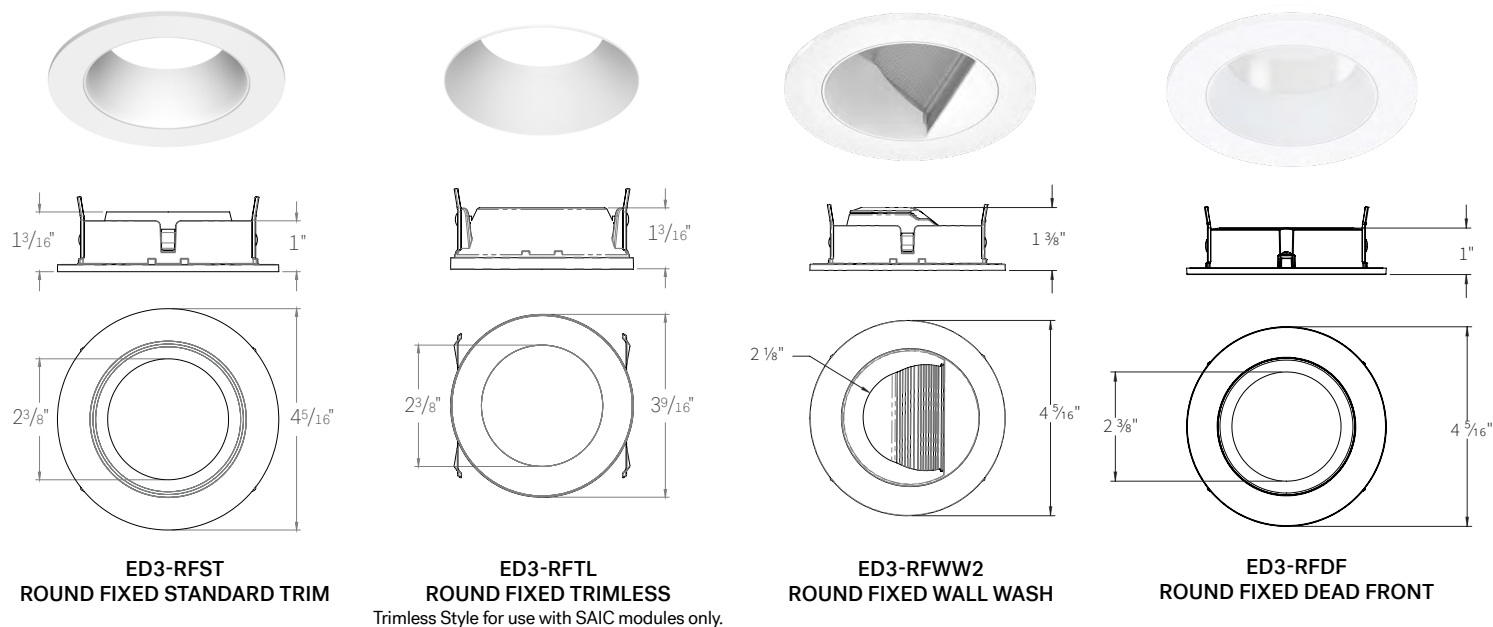


Minimum plenum height 3 1/2" at 5/8" ceiling thickness



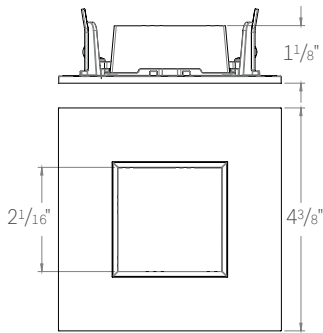
ECO 3" LED DOWNLIGHT

TRIM STYLES

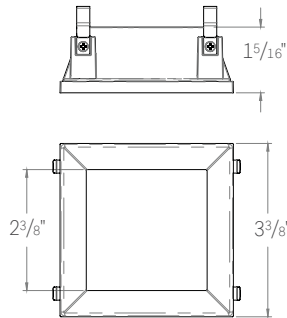
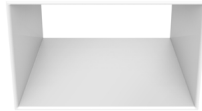


ECO 3" LED DOWNLIGHT

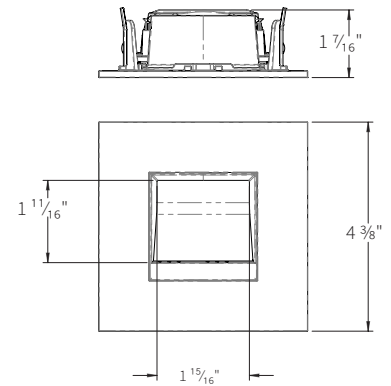
TRIM STYLES



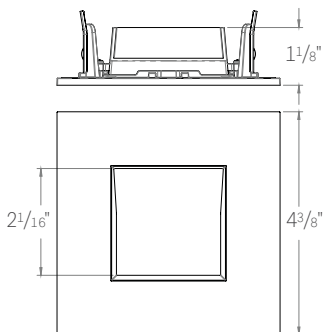
ED3-SFST
SQUARE FIXED STANDARD TRIM



ED3-SFTL
SQUARE FIXED TRIMLESS
Trimless Style for use with SAIC modules only.

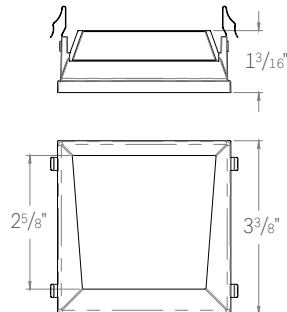


ED3-SFWW2
SQUARE FIXED WALL WASH



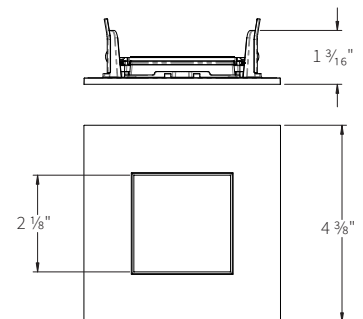
ED3-SAST
SQUARE ADJUSTABLE
STANDARD TRIM

Adjustable trim styles for use with adjustable SAIC models only.



ED3-SATL
SQUARE ADJUSTABLE TRIMLESS

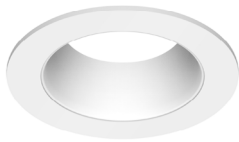
Adjustable trim styles for use with adjustable SAIC models only.



ED3-SAWR
SQUARE ADJUSTABLE
WET LOCATION REGRESSED

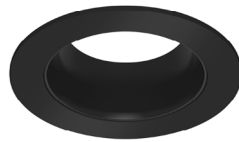
ECO 3" LED DOWNLIGHT

TRIM FINISHES



ED3-RFSTWT

WT White Reflector with White Trim



ED3-RFSTBK

BK Black Reflector with Black Trim



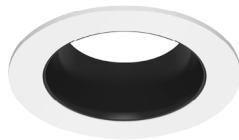
ED3-RFSTCN

CN Champagne Reflector with Champagne Trim



ED3-RFSTSW

SW Silver Reflector with White Trim



ED3-RFSTBW

BW Black Reflector with White Trim



ED3-RFSTCW

CW Champagne Reflector with White Trim



ED3-SFSTWT

WT White Reflector with White Trim



ED3-SFSTBK

BK Black Reflector with Black Trim



ED3-SFSTCN

CN Champagne Reflector with Champagne Trim



ED3-SFSTSW

SW Silver Reflector with White Trim



ED3-SFSTBW

BW Black Reflector with White Trim

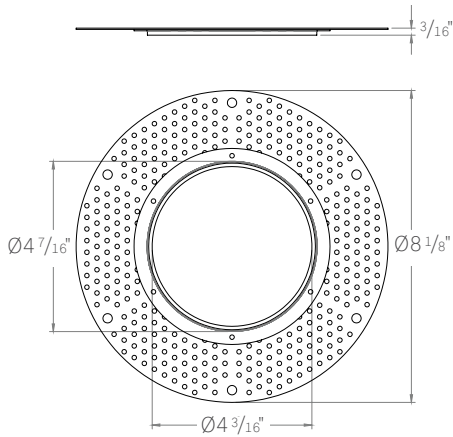


ED3-SFSTCW

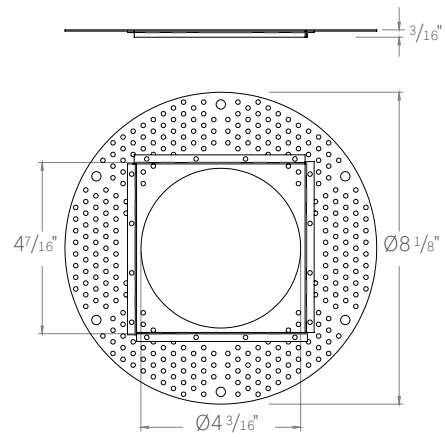
CW Champagne Reflector with White Trim

ECO 3" LED DOWNLIGHT

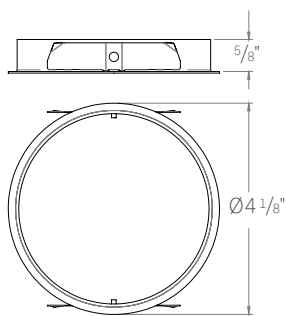
ACCESSORIES



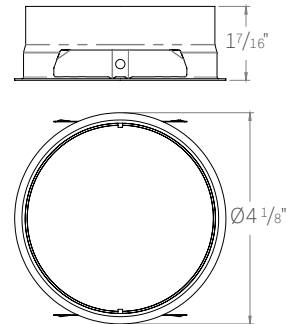
ED3-R-FMA
ROUND FLUSH MOUNT ADAPTER



ED3-S-FMA
SQUARE FLUSH MOUNT ADAPTER



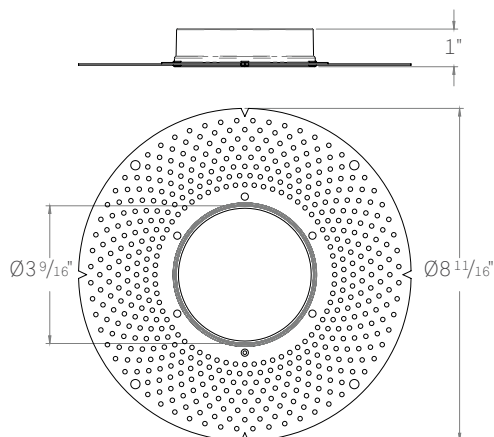
ED3-TC1
THICK CEILING ADAPTER
For ceilings 1-1/16" to 1-1/4"



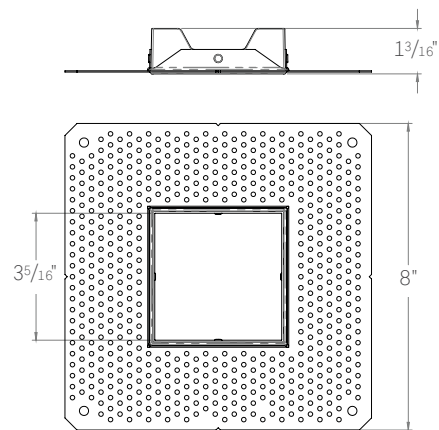
ED3-TC2
THICK CEILING ADAPTER
For ceilings 1-5/16" to 2"

ECO 3" LED DOWNLIGHT

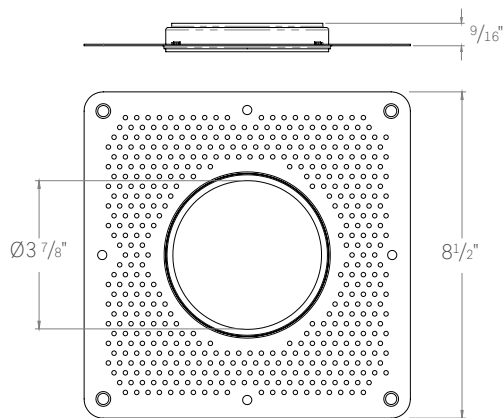
TRIMLESS ACCESSORIES



ED3-R-TL
ROUND TRIMLESS MUDPLATE
For use with SAIC housings only



ED3-S-TL
SQUARE TRIMLESS MUDPLATE
For use with SAIC housings only



ED3-R-RMTL
ROUND TRIMLESS MUDPLATE
For use with NC, NIC, RM, RIC housings only

Project: _____

Type: _____

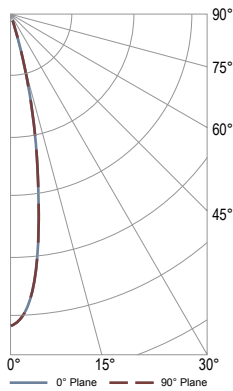
Note: _____

ECO 3" LED DOWNLIGHT

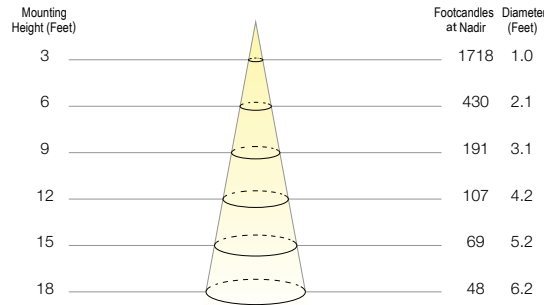
PHOTOMETRICS

Eco Downlight 3" SAIC model (2700K, 90 CRI, 10° Optic, 21W)
Round, Standard, White Trim

Polar Plot



Cone of Light Tabulation



VOLTAGE	CURRENT	POWER
120.1 VAC	0.17 A	19.9W

POWER FACTOR	FREQUENCY	CURRENT THD
0.992	60 Hz	11.4%

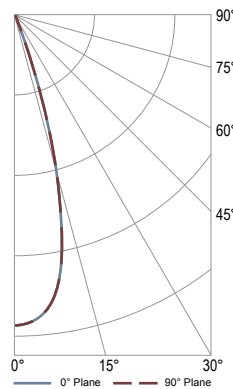
Summary of Results

Spacing Criteria	Total Lumen Output:	2013 Lumens
0-180: 0.34	Luminaire Efficacy:	101.2 lm/w
90-270: 0.34	Maximum Candela:	15465 Candela

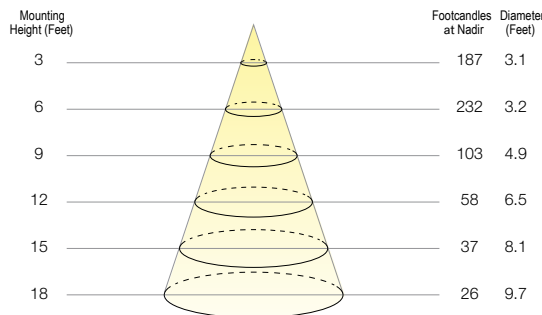
ZONE	LUMENS	% OF LUMINAIRE
0-30	1976	98.1%
0-60	2006	99.6%
0-90	2013	100%

Eco Downlight 3" SAIC model (2700K, 90 CRI, 30° Optic, 21W)
Round, Standard, White Trim

Polar Plot



Cone of Light Tabulation



VOLTAGE	CURRENT	POWER
120 VAC	0.17 A	19.85W

POWER FACTOR	FREQUENCY	CURRENT THD
0.992	60 Hz	11.4%

Summary of Results

Spacing Criteria	Total Lumen Output:	2104 Lumens
0-180: 0.52	Luminaire Efficacy:	106 lm/w
90-270: 0.52	Maximum Candela:	8340 Candela

ZONE	LUMENS	% OF LUMINAIRE
0-30	2049	97.4%
0-60	2098	99.7%
0-90	2104	100%

Project: _____

Type: _____

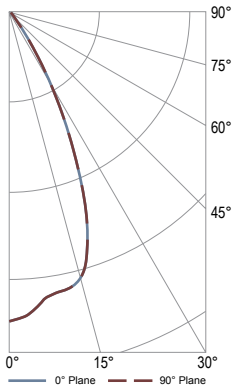
Note: _____

ECO 3" LED DOWNLIGHT

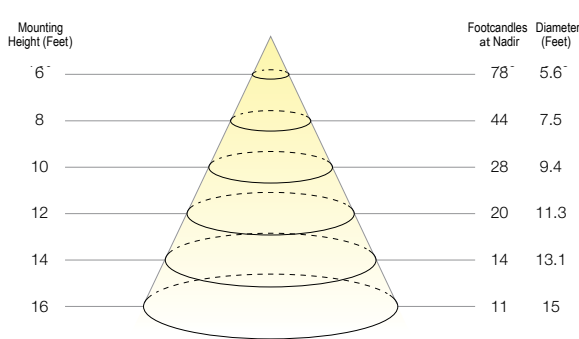
PHOTOMETRICS

Eco Downlight 3" SAIC model (2700K, 90 CRI, 50° Optic, 21W)
Round, Standard, White Trim

Polar Plot



Cone of Light Tabulation



VOLTAGE	CURRENT	POWER
120 VAC	0.17 A	19.85W

POWER FACTOR	FREQUENCY	CURRENT THD
0.992	60 Hz	11.4%

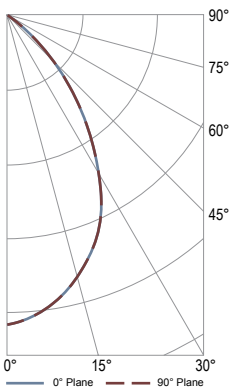
Summary of Results

Spacing Criteria	Total Lumen Output:	1921 Lumens
0-180: 0.84	Luminaire Efficacy:	97 lm/w
90-270: 0.84	Maximum Candela:	2815 Candela

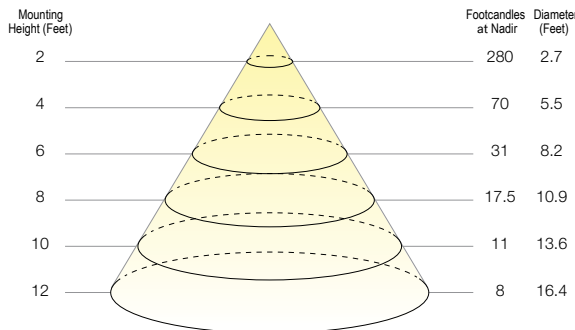
ZONE	LUMENS	% OF LUMINAIRE
0-40	1874.9	97.6%
0-60	1913.5	99.6%
0-90	1921	100%

Eco Downlight 3" SAIC model (2700K, 90 CRI, 80° Optic, 21W)
Round, Standard, White Trim

Polar Plot



Cone of Light Tabulation



VOLTAGE	CURRENT	POWER
120.0 VAC	0.17 A	19.85W

POWER FACTOR	FREQUENCY	CURRENT THD
0.992	60 Hz	11.4%

Summary of Results

Spacing Criteria	Total Lumen Output:	1357 Lumens
0-180: 1.0	Luminaire Efficacy:	68 lm/w
90-270: 1.0	Maximum Candela:	1119 Candela

ZONE	LUMENS	% OF LUMINAIRE
0-40	1080	79.6%
0-60	1334	98.3%
0-90	1357	100%

Project: _____

Type: _____

Note: _____

ECO 3" LED DOWNLIGHT

FOR DRIVER TYPE "S"

Universal Dimming Driver, ED1 and ED1L

COMPATIBLE PHASE CONTROL DIMMERS

MFG	MODEL	MFG	MODEL
Lutron	LGCL-153PL	Leviton	VPE06
Lutron	DVRP-253P	Leviton	DW1KD-1BZ
Lutron	RRD-6CL	Leviton	IPE04
Lutron	NTELV-600P	Leviton	IPL06
Lutron	DVELV-303P	Cooper	SAL06P
Lutron	MAELV-600		
Lutron	PD-6WCL		
Lutron	SELV-300P		
Lutron	DVCL-153-P		

COMPATIBLE 0-10VDC DIMMERS

MFG	MODEL
Lutron	NFTV
Lutron	DTV
Lutron	DVSTV
Leviton	IP710-LFZ
Lightolier	SR1200ZTUNV
Cooper	SF10P-W
Leviton	IP710-DL

Compatible dimmer information provided by the dimming driver manufacturer