

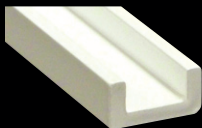
# PDQ LED

## 12V Ultra-Compact Strip Lighting

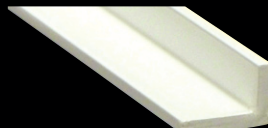
Light options in Warm & Cool White, Red, Green, Blue, Amber



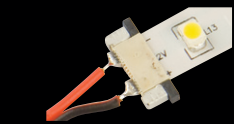
Marked for convenient cutting



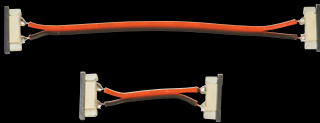
LRL-CHNL1  
3/4" w x 3/8" h



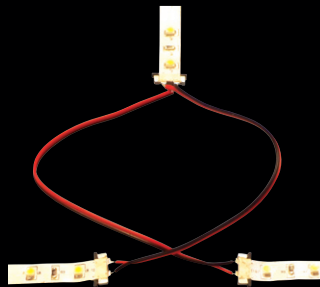
LRL-CHNL2  
3/4" w x 1/2" h



LRP Power Feed



LRC Connectors



LRCY-6 Connector

- Ultra-compact strip light – 5/16" w x 3/32" h
- Warm White 2,800°K ± 100°K – 75 lm/foot  
Cool White 5,000°K ± 100°K – 93 lm/foot
- 12VDC system – 1.52 watts per foot
- Field cuttable every 2" – cut on convenient markings
- Easy installation - 3M peel and stick adhesive pre-attached to strip
- Mounting Channels for straight runs
- Dimmable using 12VDC magnetic LED power supply
- Requires one Power Connector per run for power feed – maximum 20 feet, multiple home runs to driver acceptable
- Strip Light Connectors used to inter-connect two runs of strip light, for use in corners

ORDERING INFORMATION	
PDQ-LED	WW=Warm White 2800K CW = Cool White 5000K, AB = Amber, BL = Blue GR = Green, RD = Red
LRL-ID-5-XX	5ft PDQ-LED Strip Light,
LRL-ID-20-XX	20ft PDQ-LED Strip Light
CHANNELS Aluminum Extrusion White Powder Coat	
LRL-CHNL1	PDQ "C" Channel 48" long
LRL-CHNL2	PDQ "L" Channel 48" long
CONNECTORS (Interconnect/corners)	
LRC-1	1 inch PDQ-LED Connector
LRC-3	3 inch PDQ-LED Connector
LRC-6	6 inch PDQ-LED Connector
LRC-12	12 inch PDQ-LED Connector
LRC-24	24 inch PDQ-LED Connector
LRC-36	36 inch PDQ-LED Connector
LRCY-6	Y-Connector 6 inch leads
POWER CONNECTORS (Power feed)	
LRP-24	24 inch PDQ-LED Power Connector
LRP-48	48 inch PDQ-LED Power Connector

TRANSFORMERS	
D-105	25 watt 12VDC electronic LED power supply, indoor
D-106	60 watt 12VDC electronic LED power supply, indoor
D-107	100 watt 12VDC electronic LED power supply, indoor
D-109	10 watt 12VDC electronic LED power supply, indoor
D-110	36 watt 12VDC magnetic LED dimmable power supply, indoor/outdoor
D-111	60 watt 12VDC magnetic LED dimmable power supply, indoor/outdoor



# PDQ WET

## 12V Ultra-Compact Strip Lighting for Wet Locations

Light options in Warm & Cool White, Red, Green, Blue, Amber



- Ultra-compact strip light – ½" w x ⅜" h
- Warm White 2,900°K ± 100°K – 144 lm/foot  
Cool White 5,000°K ± 100°K – 162 lm/foot
- 12VDC system – 1.52 watts per foot
- Field cuttable every 4" – cut on convenient markings
- Easy installation - 3M peel and stick adhesive pre-attached to strip
- Mounting clips available
- Dimmable using 12VDC magnetic LED power supply
- Requires one Power Connector per run for power feed – maximum 20 feet, multiple home runs to driver acceptable
- Strip Light Connectors used to inter-connect two runs of strip light
- ETL Listed for wet locations

ORDERING INFORMATION	
PDQ-WET	WW=Warm White 2900K CW = Cool White 5000K, AB = Amber, BL = Blue GR = Green, RD = Red
LRL-OD-4IN-XX	4" PDQ-WET Strip Light
LRL-OD-1-XX	1' PDQ-WET Strip Light
LRL-ID-5-XX	5' PDQ-WET Strip Light
LRL-OD-10-XX	10' PDQ-WET Strip Light
LRL-OD-20-XX	20' PDQ-WET Strip Light
PDQ WET Power Connections (Power Feeds)	
LRP-OD-5	5' PDQ-WET Power Connector
LRP-OD-10	10' PDQ-WET Power Connector
LRP-OD-20	20' PDQ-WET Power Connector
PDQ CONNECTORS (Interconnect/corners)	
LRC-OD-3	3" PDQ-WET Connector
LRC-OD-6	6" PDQ-WET Connector
LRC-OD-12	12" PDQ-WET Connector
LRC-OD-24	24" PDQ-WET Connector
LRC-OD-36	36" PDQ-WET Connector

TRANSFORMERS	
D-105	25 watt 12VDC electronic LED power supply, indoor
D-106	60 watt 12VDC electronic LED power supply, indoor
D-107	100 watt 12VDC electronic LED power supply, indoor
D-109	10 watt 12VDC electronic LED power supply, indoor
D-110	36 watt 12VDC magnetic LED dimmable power supply, indoor/outdoor
D-111	60 watt 12VDC magnetic LED dimmable power supply, indoor/outdoor

