



ENTITY
CYLINDERS

**ENTITY (Flush)
2", 3", 5" LED DOWNLIGHT
(Round & Square)**

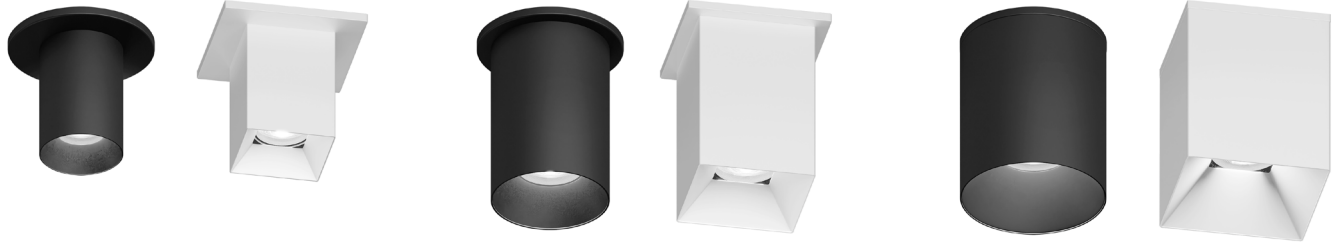
PROJECT: _____

TYPE: _____

NOTE: _____

SPEC-00283 ENTITY SS4021 2"3"5", V-1.0, UPDATED 03/14/2024

SS4021-RF2, RF3, RF5, SF2, SF3, SF5



2" Entity Flush Mount (Round & Square)
with Standard Driver Canopy

3" Entity Flush Mount (Round & Square)
with Standard Driver Canopy

5" Entity Flush Mount (Round & Square)
with Standard Driver Canopy

LED LIGHT ENGINE

| | |
|------------------|---|
| RATED WATTAGE | 2" (10W,15W), 3" and 5" (15W-30W) |
| DELIVERED LUMENS | Up to: 2" 1554 lm, 3" 3175 lm, 5" 3383 lm |
| CCT/CRI | 2700K 90CRI, 3000K 90CRI, 4000K 80CRI, WARM DIM 98CRI |
| COLOR QUALITY | 2700K-3500K 90+ CRI, 2-Step SDCM |
| LED LIFETIME | 55,000 hours @ L90 |

| SIZE | MAX POWER | LUMENS @ 3500K | | | |
|--------|-----------|----------------|-----------|-----------|-----------|
| | | 10° Optic | 30° Optic | 50° Optic | 80° Optic |
| 2 Inch | 15 Watt | 1224 lm | 1306 lm | 1205 lm | 1017 lm |
| 3 Inch | 30 Watt | 2227 lm | 2646 lm | 2440 lm | 2023 lm |
| 5 Inch | 30 Watt | 2637 lm | 2891 lm | 2875 lm | 1944 lm |

CCT MULTIPLIER CHART

| SIZE | 2700K 90CRI | 3000K 90CRI | 3500K 90CRI | 4000K 80CRI | WARM DIM 98CRI |
|--------|-------------|-------------|-------------|-------------|----------------|
| 2 Inch | 0.92 | 0.97 | 1.00 | 1.19 | 0.65 |
| 3 Inch | 0.91 | 0.97 | 1.00 | 1.20 | 0.60 |
| 5 Inch | 0.92 | 0.96 | 1.00 | 1.17 | 0.63 |

POWER MULTIPLIER CHART

| SIZE | 10W | 15W | 20W | 25W | 30W |
|--------|------|------|------|------|------|
| 2 Inch | 0.75 | 1.00 | | | |
| 3 Inch | | 0.57 | 0.65 | 0.78 | 1.00 |
| 5 Inch | | 0.50 | 0.70 | 0.90 | 1.00 |

SILENT VU™ OPTICS TECHNOLOGY

| | |
|------------|---|
| OPTICS | 10°, 30°, 50°, 80° Available |
| ADJUSTABLE | Non Adjustable |
| MEDIA | Clear, Solite, Frosted, Linear Spread, Hex Louver |

POWER SUPPLY

| | |
|---------------|---|
| INPUT VOLTAGE | 120/277V, 50/60Hz |
| DIMMING | Multiple Dimming Drivers Available |
| SERVICABILITY | Light Module and Driver Field Serviceable |

STANDARD FINISH

WT (Semi Gloss White) MB (Matte Black)

- All custom finishes available (see finishes sample page)

MOUNTING

- 5" x 1/3" canopy included with standard universal dim driver (7 1/8" x 2 1/4" round canopy or 6 1/4" x 2 1/4" square canopy included with Lutron, EldoLED and DMX Driver options)
- Standard Driver canopy mounts a 4" round junction box
- Alternative Driver canopy mounts to standard 4" round and square junction boxes

LISTING / WARRANTY

- Five (5) year limited warranty
- cULus Listed for Wet Location
- UL Listed for 35°C Ambient
- CA Title 24-JA8 Compliant



2" FLUSH MOUNT ORDER MATRIX

2" ENTITY LED FLUSH MOUNT (EXAMPLE: SS4021-RF2-10-27-30-CL-CL-WT-C-1-S)

| SHAPE | WATTAGE | CCT/CRI | OPTIC | MEDIA 1 | MEDIA 2 |
|--|-----------------------------|--|--|--------------------------------|--------------------------------------|
| SS4021-RF2 Entity Flush Downlight 2" Round | -10 (10W) | -27 (2700K 90CRI) | -10 (10° Spot) | (blank) (None) | (blank) (None) |
| | -15 (15W) | -30 (3000K 90CRI) | -30 (30° Narrow Flood) | CL (Clear Lens) | CL (Clear Lens) |
| SS4021-SF2 Entity Flush Downlight 2" Square | | -35 (3500K 90CRI) | -50 (50° Flood) | MP (Solite Lens) | MP (Solite Lens) |
| | | -40 (4000K 80CRI) | -80* (80° Wide Flood) | FR (Frosted Lens) | FR (Frosted Lens) |
| | | -WD* (Warm Dim 98CRI) | <small>*WD with 80 degree optic not CA title 24 compliant.</small> | LS (Linear Spread Lens) | LS (Linear Spread Lens) |
| | | <small>* Media 1 lens required. For WD with 10°, 30°, 50° Optic use MP (Solite Lens). For WD with 80° Optic use FR (Frosted Lens).</small> | | HEX (Hex Louver) | Holds 1 Media only when HEX selected |
| STANDARD FINISH | COASTAL COATING | REVISION | STANDARD DRIVER | | |
| -WT (Semi Gloss White) | (blank) (None) | -1 (Revision) | -S (Universal Dim Driver: 1%-100% 0-10V, TRIAC, ELV, 120V/277V) | | |
| -MB (Matte Black) | -C (Coastal Coating) | | ALTERNATIVE DRIVER | | |
| <input type="checkbox"/> (See Page 5 for Color Finish Codes) | | | -L3 (Lutron Dim Driver: 1%-100% EcoSystem, 120V/277V) | | |
| | | | -EL1 (EldoLED DALI Dim: 1%-100% DALI, 120V/277V) | | |
| | | | -EL2 (EldoLED Dim: 0.1%-100% 0-10V, 120V/277V) | | |
| | | | -DMX (DMX Dim: 1%-100% DMX, 120V/277V) | | |
| NOTE: Ambient temperature rated for 25°C. | | | | | |

ACCESSORIES (2" ENTITY)

| OPTIC |
|---------------------------------------|
| C2-10-OPTIC (10° Spot) |
| C2-30-OPTIC (30° Narrow Flood) |
| C2-50-OPTIC (50° Flood) |
| C2-80-OPTIC (80° Wide Flood) |

| MEDIA |
|-----------------------------------|
| C2-CL (Clear Lens) |
| C2-MP (Solite Lens) |
| C2-FR (Frosted Lens) |
| C2-LS (Linear Spread Lens) |
| C2-HEX (Hex Louver) |

EMERGENCY

| DRIVER |
|--|
| EM-1000 (25W Remote Inverter) |
| EM-1002 (10W Remote EM Driver) |
| EM-1003-CA (35W Remote Inverter) Title 20 |
| EM-1004 (50W Remote Inverter) |
| EM-1006 (25W Remote Inverter) Title 20 |

3" FLUSH MOUNT ORDER MATRIX

3" ENTITY LED FLUSH MOUNT (EXAMPLE: SS4021-RF3-10-27-30-CL-CL-WT-C-1-S)

| SHAPE | WATTAGE | CCT/CRI | OPTIC | MEDIA 1 | MEDIA 2 |
|--|-----------------------------|--|--|--------------------------------|--------------------------------------|
| SS4021-RF3 Entity Flush Downlight 3" Round | -15 (15W) | -27 (2700K 90CRI) | -10 (10° Spot) | (blank) (None) | (blank) (None) |
| | -20 (20W) | -30 (3000K 90CRI) | -30 (30° Narrow Flood) | CL (Clear Lens) | CL (Clear Lens) |
| | -25 (25W) | -35 (3500K 90CRI) | -50 (50° Flood) | MP (Solite Lens) | MP (Solite Lens) |
| SS4021-SF3 Entity Flush Downlight 3" Square | -30 (30W) | -40 (4000K 80CRI) | -80* (80° Wide Flood) | FR (Frosted Lens) | FR (Frosted Lens) |
| | | -WD* (Warm Dim 98CRI) | <small>*WD with 80 degree optic not CA title 24 compliant.</small> | LS (Linear Spread Lens) | LS (Linear Spread Lens) |
| | | <small>* Media 1 lens required. For WD with 10°, 30°, 50° Optic use MP (Solite Lens). For WD with 80° Optic use FR (Frosted Lens).</small> | | HEX (Hex Louver) | Holds 1 Media only when HEX selected |
| STANDARD FINISH | COASTAL COATING | REVISION | STANDARD DRIVER | | |
| -WT (Semi Gloss White) | (blank) (None) | -1 (Revision) | -S (Universal Dim Driver: 1%-100% 0-10V, TRIAC, ELV, 120V/277V) | | |
| -MB (Matte Black) | -C (Coastal Coating) | | ALTERNATIVE DRIVER | | |
| <input type="checkbox"/> (See Page 5 for Color Finish Codes) | | | -L3 (Lutron Dim Driver: 1%-100% EcoSystem, 120V/277V) | | |
| | | | -EL1 (EldoLED DALI Dim: 1%-100% DALI, 120V/277V) | | |
| | | | -EL2 (EldoLED Dim: 0.1%-100% 0-10V, 120V/277V) | | |
| | | | -DMX (DMX Dim: 1%-100% DMX, 120V/277V) | | |
| NOTE: Ambient temperature rated for 25°C. | | | | | |

ACCESSORIES (3" ENTITY)

| OPTIC |
|---------------------------------------|
| C3-10-OPTIC (10° Spot) |
| C3-30-OPTIC (30° Narrow Flood) |
| C3-50-OPTIC (50° Flood) |
| C3-80-OPTIC (80° Wide Flood) |

| MEDIA |
|-----------------------------------|
| C3-CL (Clear Lens) |
| C3-MP (Solite Lens) |
| C3-FR (Frosted Lens) |
| C3-LS (Linear Spread Lens) |
| C3-HEX (Hex Louver) |

EMERGENCY

| DRIVER |
|--|
| EM-1000 (25W Remote Inverter) |
| EM-1002 (10W Remote EM Driver) |
| EM-1003-CA (35W Remote Inverter) Title 20 |
| EM-1004 (50W Remote Inverter) |
| EM-1006 (25W Remote Inverter) Title 20 |

5" FLUSH MOUNT ORDER MATRIX

5" ENTITY LED FLUSH MOUNT (EXAMPLE: SS4021-RF5-10-27-30-CL-CL-WT-C-1-S)

| SHAPE | WATTAGE | CCT/CRI | OPTIC | MEDIA 1 | MEDIA 2 |
|--|-----------------------------|--|--|--------------------------------|--------------------------------------|
| SS4021-RF5 Entity Flush Downlight 5" Round | -15 (15W) | -27 (2700K 90CRI) | -10 (10° Spot) | (blank) (None) | (blank) (None) |
| | -20 (20W) | -30 (3000K 90CRI) | -30 (30° Narrow Flood) | CL (Clear Lens) | CL (Clear Lens) |
| | -25 (25W) | -35 (3500K 90CRI) | -50 (50° Flood) | MP (Solite Lens) | MP (Solite Lens) |
| SS4021-SF5 Entity Flush Downlight 5" Square | -30 (30W) | -40 (4000K 80CRI) | -80* (80° Wide Flood) | FR (Frosted Lens) | FR (Frosted Lens) |
| | | -WD* (Warm Dim 98CRI) | <small>*WD with 80 degree optic not CA title 24 compliant.</small> | LS (Linear Spread Lens) | LS (Linear Spread Lens) |
| | | <small>* Media 1 lens required. For WD with 10°, 30°, 50° Optic use MP (Solite Lens). For WD with 80° Optic use FR (Frosted Lens).</small> | | HEX (Hex Louver) | Holds 1 Media only when HEX selected |
| STANDARD FINISH | COASTAL COATING | REVISION | STANDARD DRIVER | | |
| -WT (Semi Gloss White) | (blank) (None) | -1 (Revision) | -S (Universal Dim Driver: 1%-100% 0-10V, TRIAC, ELV, 120V/277V) | | |
| -MB (Matte Black) | -C (Coastal Coating) | | ALTERNATIVE DRIVER | | |
| <input type="checkbox"/> (See Page 5 for Color Finish Codes) | | | -L3 (Lutron Dim Driver: 1%-100% EcoSystem, 120V/277V) | | |
| | | | -EL1 (EldoLED DALI Dim: 1%-100% DALI, 120V/277V) | | |
| | | | -EL2 (EldoLED Dim: 0.1%-100% 0-10V, 120V/277V) | | |
| | | | -DMX (DMX Dim: 1%-100% DMX, 120V/277V) | | |
| NOTE: Ambient temperature rated for 25°C. | | | | | |

ACCESSORIES (5" ENTITY)

| OPTIC |
|---------------------------------------|
| C5-10-OPTIC (10° Spot) |
| C5-30-OPTIC (30° Narrow Flood) |
| C5-50-OPTIC (50° Flood) |
| C5-80-OPTIC (80° Wide Flood) |

| MEDIA |
|-----------------------------------|
| C5-CL (Clear Lens) |
| C5-MP (Solite Lens) |
| C5-FR (Frosted Lens) |
| C5-LS (Linear Spread Lens) |
| C5-HEX (Hex Louver) |

EMERGENCY

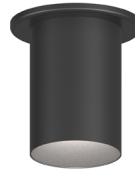
| DRIVER |
|--|
| EM-1000 (25W Remote Inverter) |
| EM-1002 (10W Remote EM Driver) |
| EM-1003-CA (35W Remote Inverter) Title 20 |
| EM-1004 (50W Remote Inverter) |
| EM-1006 (25W Remote Inverter) Title 20 |

STANDARD FINISH

(Standard Driver Mount Shown)



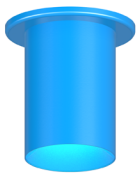
WT
Semi Gloss White



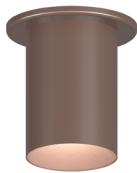
MB
Matte Black

COLOR FINISH

(Standard Driver Mount Shown)



ABL
Aegean Blue



BB
Burnished Bronze



BK
Gloss Black



BLU
Blue



DVG
Dove Gray



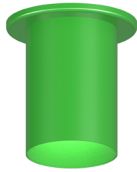
FLG
Flannel Gray



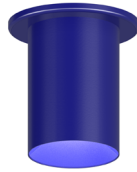
GA
Galvanized



GWT
Gloss White



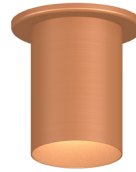
LG
Lime Green



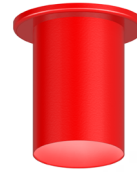
MBL
Midnight Blue



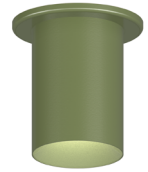
PNA
Painted Natural Aluminum



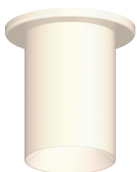
PNC
Painted Natural Copper



RD
Red



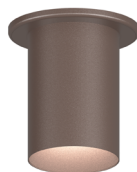
SGR
Sage Green



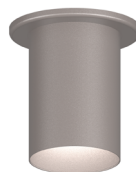
SND
Sand



SS
Satin Silver



TBZ
Textured Bronze



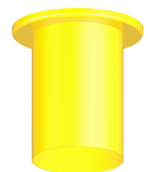
TGP
Textured Graphite



TNG
Tangerine



TTL
Tahitian Teal

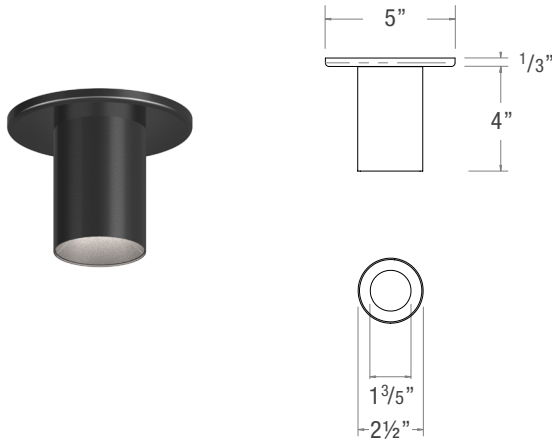


YEL
Yellow

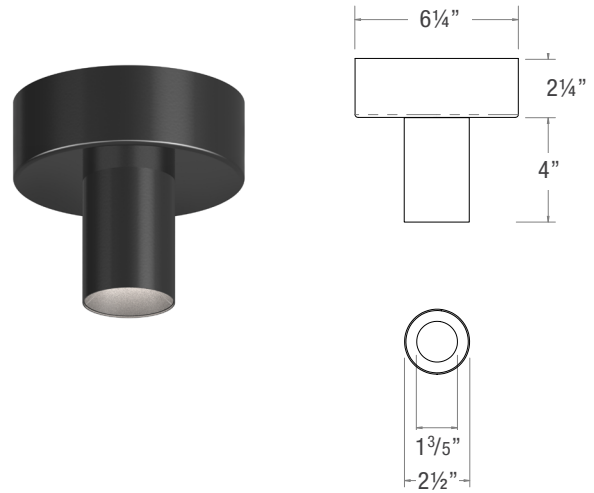
2" ROUND ENTITY FLUSH

SS4021-RF2 (2" Entity Round Downlight - Flush Mount)

STANDARD DRIVER CANOPY



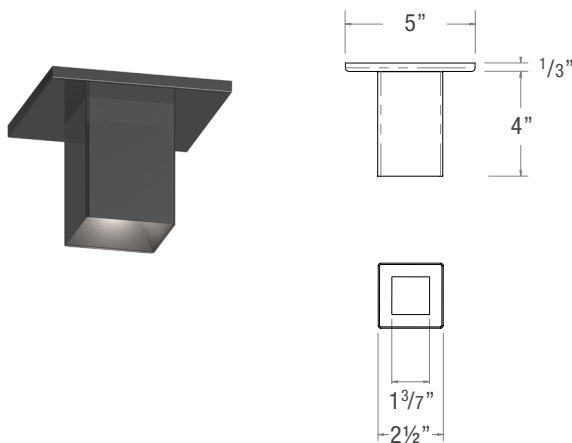
ALTERNATIVE DRIVER CANOPY



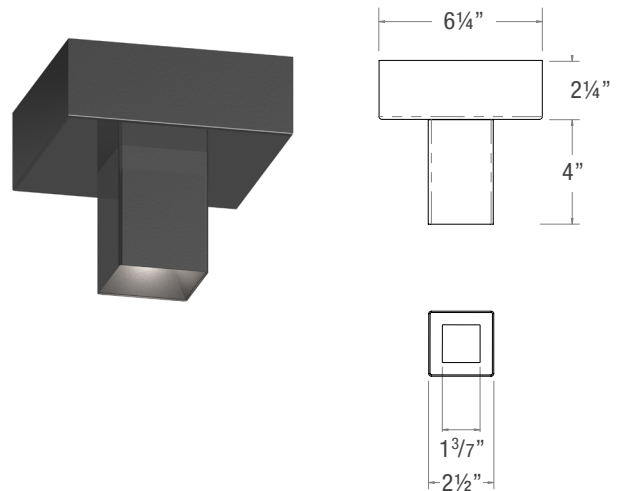
2" SQUARE ENTITY FLUSH

SS4021-SF2 (2" Entity Square Downlight - Flush Mount)

STANDARD DRIVER CANOPY



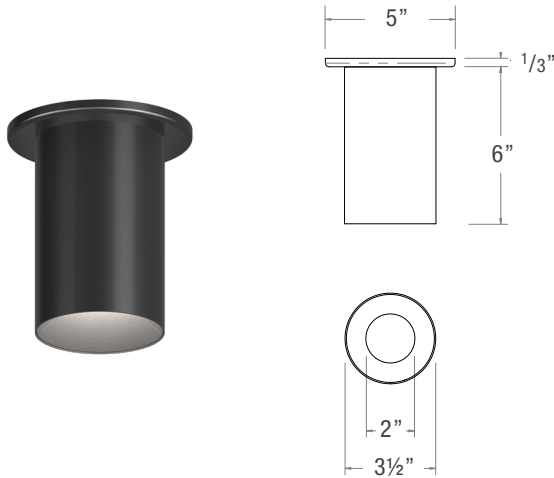
ALTERNATIVE DRIVER CANOPY



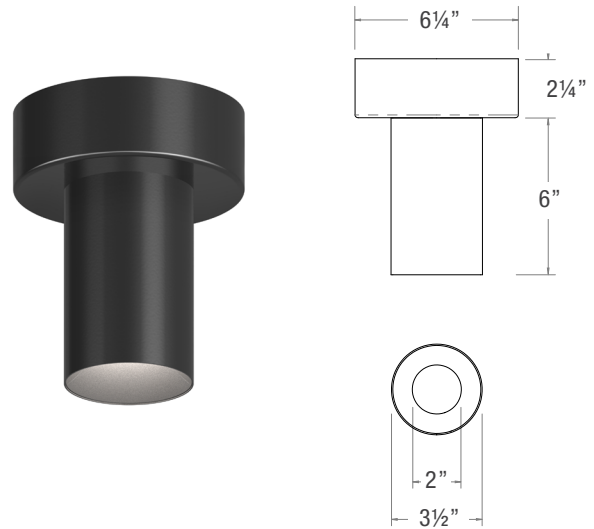
3" ROUND ENTITY FLUSH

SS4021-RF3 (3" Entity Round Downlight - Flush Mount)

STANDARD DRIVER CANOPY



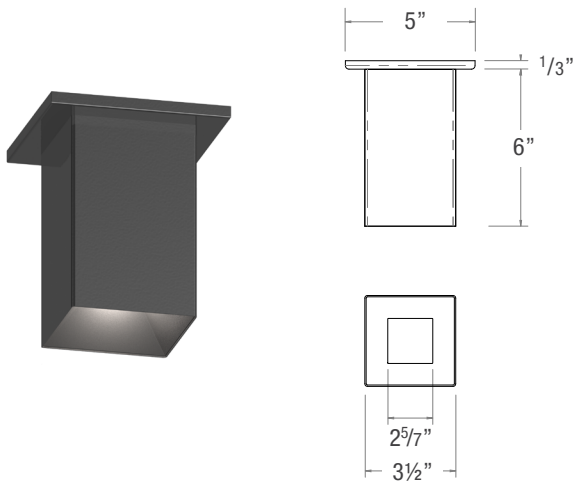
ALTERNATIVE DRIVER CANOPY



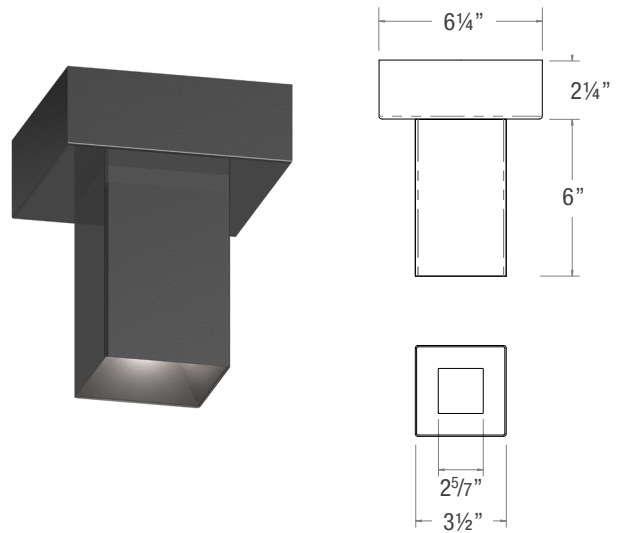
3" SQUARE ENTITY FLUSH

SS4021-SF3 (3" Entity Square Downlight - Flush Mount)

STANDARD DRIVER CANOPY



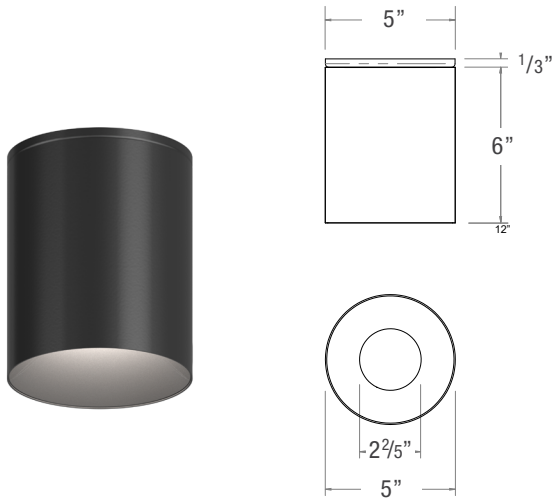
ALTERNATIVE DRIVER CANOPY



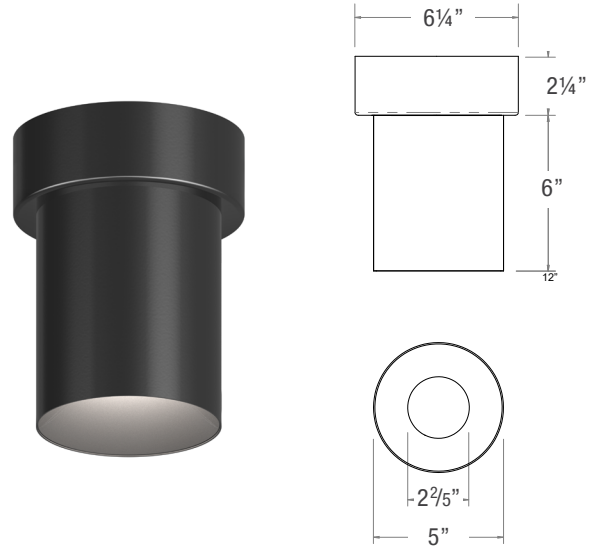
5" ROUND ENTITY FLUSH

SS4021-RF5 (5" Entity Round Downlight - Flush Mount)

STANDARD DRIVER CANOPY



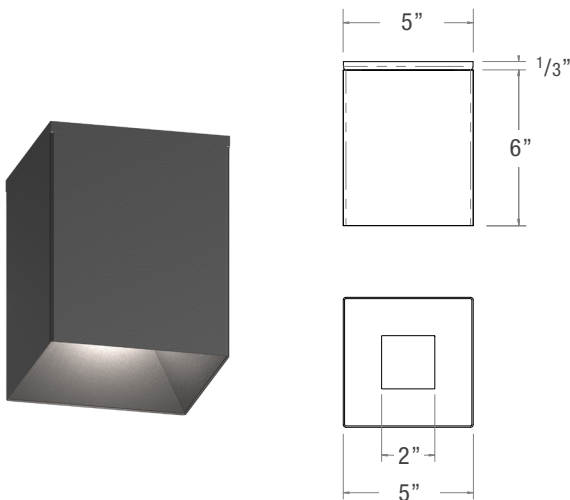
ALTERNATIVE DRIVER CANOPY



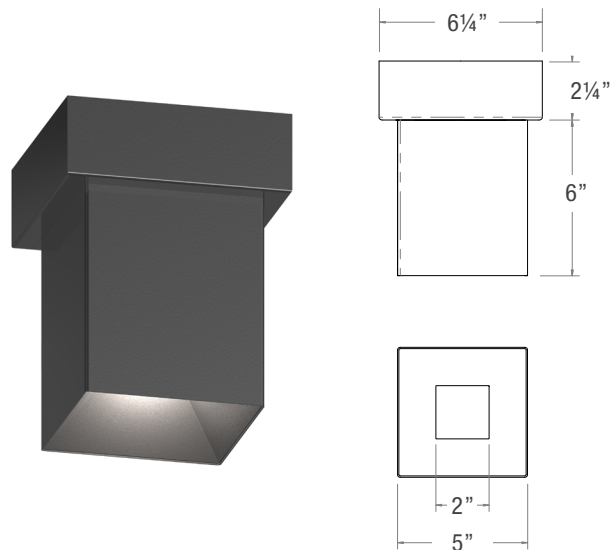
5" SQUARE ENTITY FLUSH

SS4021-SF5 (5" Entity Square Downlight - Flush Mount)

STANDARD DRIVER CANOPY



ALTERNATIVE DRIVER CANOPY





ENTITY
CYLINDERS

**ENTITY (Flush)
2", 3", 5" LED DOWNLIGHT
(Round & Square)**

PROJECT: _____

TYPE: _____

SPEC-00283 ENTITY SS4021 2"3"5", V-1.0, UPDATED 03/14/2024

SS4021-RF2, RF3, RF5, SF2, SF3, SF5

NOTE: _____

DIMMING DRIVER COMPATIBILITY

DIMMER LIST

| "S" Standard Universal Dim | | | |
|-----------------------------|------------|-------------------------|----------------|
| Compatible Phase Cut Dimmer | | Compatible 1-10V Dimmer | |
| Manufacturer | Product | Manufacturer | Product |
| Cooper | DAL06P | Leviton | IP740-DLZ |
| | DLC03P | Lightolier | ZP600FAM120 |
| | SLC03P | | V2000FAMU |
| Leviton | 6161 | Lutron | DVTV |
| | 6631-2 | | NTFTV |
| | 6633-P | Crestron | CLS-EXP-DIMFLV |
| | 6673-10W | | DIN-4DIMFLV4 |
| | 6683-IW | | DIN-A08 |
| | IPE04 | | GLX-DIMFLV8 |
| | IPI06-1LZ | | |
| | VPE06 | | |
| | Lightolier | ZP26QEW | |
| | Lutron | CT103P | |
| DV600P | | | |
| DVCL-153P | | | |
| DVEL303P | | | |
| FAELV500 | | | |
| LG600P | | | |
| MAELV600 | | | |
| S600P | | | |
| S-603PG | | | |
| SELV300P | | | |
| TG-600P | | | |
| | TGCL-153P | | |

DIMMING DRIVER COMPATIBILITY

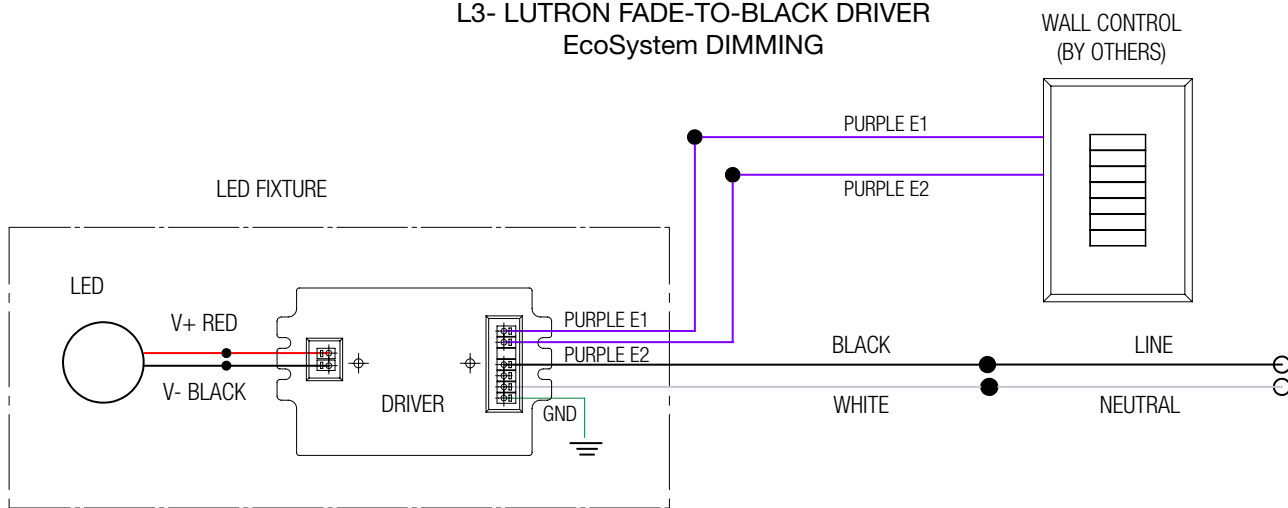
DIMMER LIST

| "L3" Lutron Fade-to-Black | |
|---------------------------|------------------------------|
| Manufacturer | Product |
| Lutron | LQSE-2ECO-D |
| | RMJ-ECO32-DV-B |
| | FCJ/FCJS-ECO |
| | QSN-1ECO-S |
| | QSN-2ECO-S |
| | EcoSystem ESN |
| | Grafik Eye QS with EcoSystem |
| | Quantum |

NOTES:

Wiring diagrams are examples of typical installations intended to illustrate the number of wires that must be run to fixture. These diagrams are not intended to specify all equipment necessary for a given dimming circuit. Refer to specific dimmer manufacturer's documentation for details.

**L3- LUTRON FADE-TO-BLACK DRIVER
EcoSystem DIMMING**



IMPORTANT SAFETY INSTRUCTIONS

- SAVE THESE INSTRUCTIONS

1. Keep these instructions in a safe place for future reference.
2. Only qualified electricians in accordance to local codes should install these fixtures.
3. De-energize the electrical circuit at the circuit breaker prior to installation process or servicing.
4. Make sure all connections are in accordance with the National Electrical Code and any local regulations.
5. Cap any wires not used separately (not together).

DIMMING DRIVER COMPATIBILITY

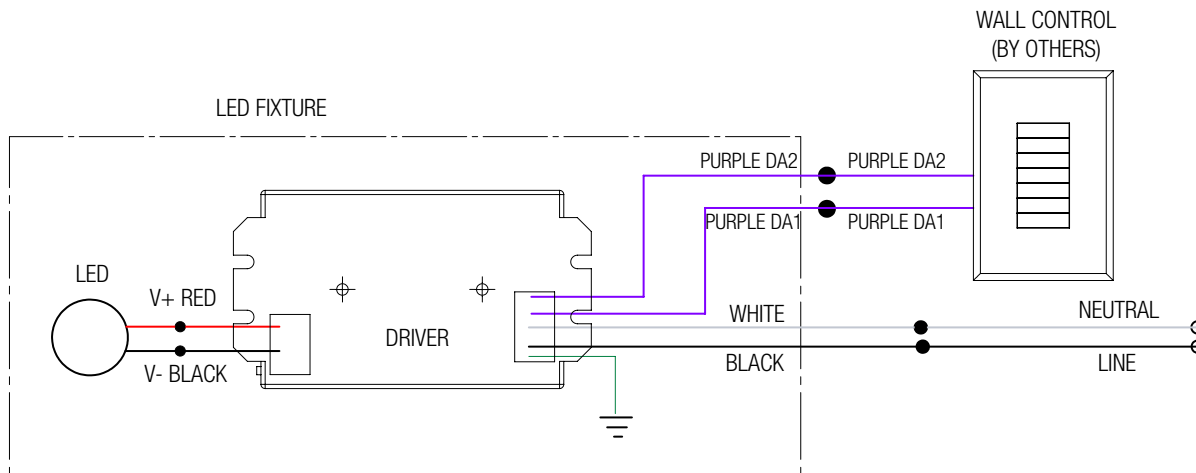
DIMMER LIST

| "EL1" EldoLED DALI 1% | |
|-----------------------|---------------|
| Manufacturer | Product |
| | DALI Controls |

NOTES:

Wiring diagrams are examples of typical installations intended to illustrate the number of wires that must be run to fixture. These diagrams are not intended to specify all equipment necessary for a given dimming circuit. Refer to specific dimmer manufacturer's documentation for details.

**EL1- EldoLED DRIVER
DALI DIMMING**



IMPORTANT SAFETY INSTRUCTIONS

- SAVE THESE INSTRUCTIONS

1. Keep these instructions in a safe place for future reference.
2. Only qualified electricians in accordance to local codes should install these fixtures.
3. De-energize the electrical circuit at the circuit breaker prior to installation process or servicing.
4. Make sure all connections are in accordance with the National Electrical Code and any local regulations.
5. Cap any wires not used separately (not together).

DIMMING DRIVER COMPATIBILITY

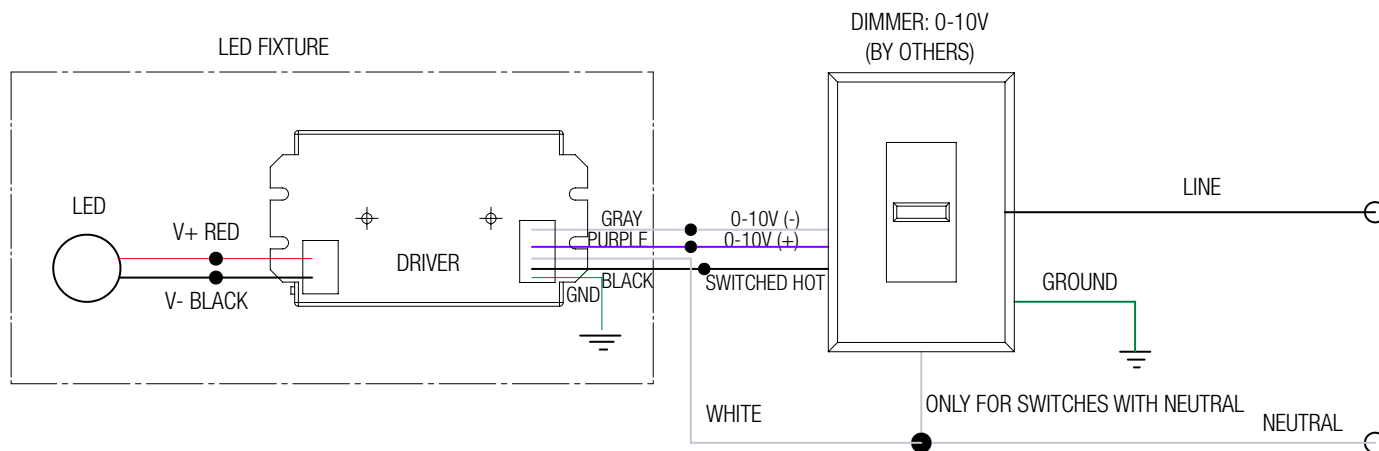
DIMMER LIST

| "EL2" EldoLED 0-10V 1% | |
|------------------------|----------------|
| Manufacturer | Product |
| Leviton | IP740-DLX |
| Lightolier | ZP600FAM120 |
| Lutron | DVTV |
| | NTFTV |
| | NFTV |
| Crestron | CLS-EXP-DIMFLV |
| | DIN-4DIMFLV4 |
| | DIN-A08 |
| | GLX-DIMFLV8 |

NOTES:

Wiring diagrams are examples of typical installations intended to illustrate the number of wires that must be run to fixture. These diagrams are not intended to specify all equipment necessary for a given dimming circuit. Refer to specific dimmer manufacturer's documentation for details.

**EL2- EldoLED DRIVER
0-10V DIMMING**



IMPORTANT SAFETY INSTRUCTIONS

- SAVE THESE INSTRUCTIONS

1. Keep these instructions in a safe place for future reference.
2. Only qualified electricians in accordance to local codes should install these fixtures.
3. De-energize the electrical circuit at the circuit breaker prior to installation process or servicing.
4. Make sure all connections are in accordance with the National Electrical Code and any local regulations.
5. Cap any wires not used separately (not together).

DIMMING DRIVER COMPATIBILITY

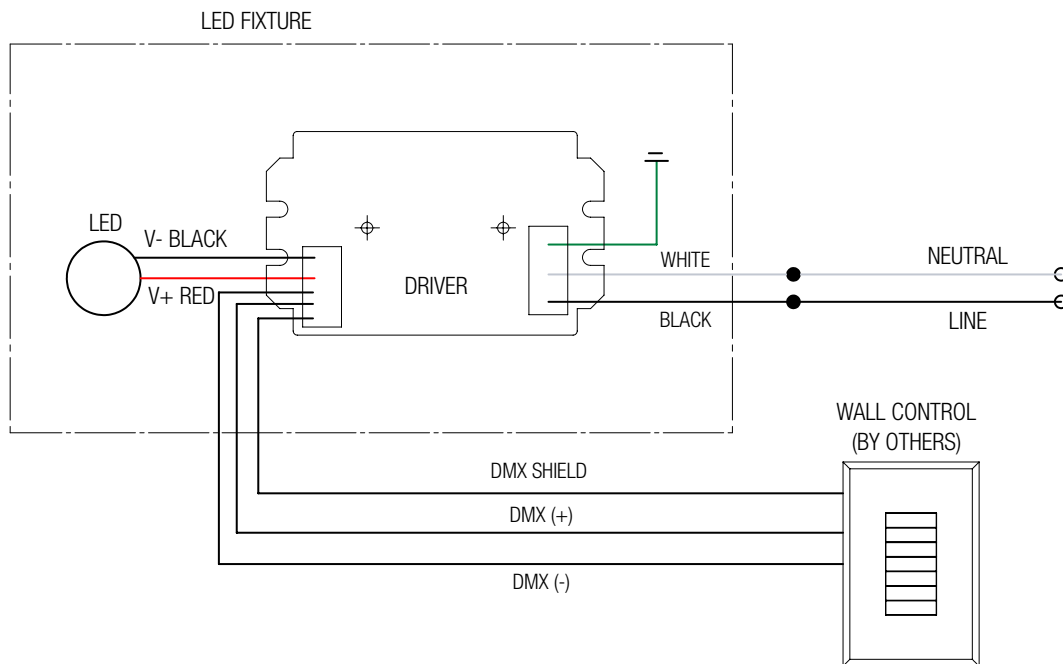
DIMMER LIST

| "DMX" Moons | |
|--------------|--------------|
| Manufacturer | Product |
| | DMX Controls |

NOTES:

Wiring diagrams are examples of typical installations intended to illustrate the number of wires that must be run to fixture. These diagrams are not intended to specify all equipment necessary for a given dimming circuit. Refer to specific dimmer manufacturer's documentation for details.

**DMX- MOONS DRIVER
DMX DIMMING**



IMPORTANT SAFETY INSTRUCTIONS

- SAVE THESE INSTRUCTIONS

1. Keep these instructions in a safe place for future reference.
2. Only qualified electricians in accordance to local codes should install these fixtures.
3. De-energize the electrical circuit at the circuit breaker prior to installation process or servicing.
4. Make sure all connections are in accordance with the National Electrical Code and any local regulations.
5. Cap any wires not used separately (not together).